

# NEWSLETTER

NexGen  
Receives  
Strong  
Support for  
Rook I Project  
Financing in  
Excess of  
US\$1 Billion

VDOMF: Top Winner  
TASEF: Top Loser



Silver went up this  
week by 2.31%



### Copper Junior Miners

Neutral



- Copper Indices: **Neutral**
- Commodity Sentiment: **Neutral**
- Junior Miners Sentiment: **Positive**

## Weekly Market Overview

Commodity	Weekly Chg.	Weekly Chg. %	Vol.
Gold	↗	1.34%	1.50%
Silver	↗	2.31%	1.60%
Copper	↘	-0.97%	0.47%
Platinum	↘	-1.02%	1.73%
Aluminium	↘	-1.32%	1.41%
Palladium	↘	-0.79%	2.17%
Nickel	↗	0.05%	3.78%
Lead	↘	-2.66%	0.73%
Tin	↘	-0.28%	1.95%
Zinc	↘	-1.86%	1.27%

### Gold Junior Miners

**Positive**

- Gold Indices: **Positive**
- Commodity Sentiment: **Neutral**
- Junior Miners Sentiment: **Positive**

### Silver Junior Miners

**Positive**

- Silver Indices: **Positive**
- Commodity Sentiment: **Neutral**
- Junior Miners Sentiment: **Positive**

### Copper Junior Miners

**Neutral**

- Copper Indices: **Neutral**
- Commodity Sentiment: **Neutral**
- Junior Miners Sentiment: **Positive**

### Commodity Sentiment

**Neutral**

- Commodities Indices: **Neutral**
- Inflation: **Positive**
- Consumer Sentiment: **Positive**

### Junior Miners Sentiment

**Positive**

- Gold Indices: **Positive**
- Silver Indices: **Positive**
- Copper Indices: **Neutral**
- Commodity Sentiment: **Neutral**

Our barometer is a way to gauge market movements and whether security instruments are fairly priced. The theory is based on the logic that excessive negativity tends to drive down the prices, and too much positivity tends to have the opposite effect.

Our barometer is a compilation of different indicators that measure some aspect of ETF and commodities behavior. They are comprised of market momentum, price strength, and stock price breadth. It tracks how much these individual indicators deviate from their average. The weightage of each factor is subject to past behavior and market conditions.

Top 5 ↗		Top 5 ↘	
Ticker	1 W Chg. %	Ticker	1 W Chg. %
VDOMF	111.85%	TASEF	-85.07%
FCGD	100.00%	GNGXF	-78.11%
USCS	96.00%	GTRIF	-69.38%
NVAAF	93.55%	PUCCF	58.71%
SIXWF	73.75%	PRRVF	49.24%

### Top 5 Weekly Private Placement News

- NexGen Receives Strong Support for Project Financing in Excess of \$1B: [Link](#)
- Generation Mining Announces \$400M Senior Debt Facility: [Link](#)
- Atlas Lithium Receives \$20M in Non-Dilutive Funding: [Link](#)
- Lion One Announces C\$27M “Bought Deal” Offering of Units: [Link](#)
- Meridian Announces Closing of \$18.4M Bought Deal Public Offering: [Link](#)

**33 Deals**  
**>\$1,554M**

[Find all the Private Placements and News HERE](#)

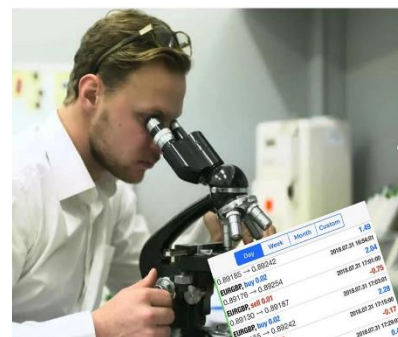
### Top Junior Mining News

- Integra Resources and Millennial Precious Metals Complete Friendly At-Market Merger: [Link](#)
- Tarachi Gold Signs Definitive Agreement For US\$5.7 Million Sale Of Magistral Project: [Link](#)
- Sibanye commences compulsory acquisition of New Century: [Link](#)
- BHP: Completion of OZ Minerals acquisition: [Link](#)
- Osisko Mining and Gold Fields Announce 50/50 Joint Venture on Windfall Gold Project: [Link](#)

### Opinions and Insights

- Gold Weekly Price Forecast: [Link](#)
- Silver Weekly Price Forecast: [Link](#)
- Week Ahead: [Link](#)
- Buffett faults US government handling of banking crisis: [Link](#)
- Charting the Global Economy: Fed, ECB Policies May Diverge: [Link](#)
- Fed’s Progress on Inflation Set for Latest Test: [Link](#)
- World Trade Data Begin to Show Early Signs of ‘Reglobalization’: [Link](#)
- Gold sheds 2% on US jobs growth as Fed-led rally fizzles: [Link](#)
- Gold nears all-time high on likely Fed pause: [Link](#)
- Silver: Recognizes Gravity, For Now: [Link](#)

**When your profits are still too small  
to be visible to the naked eye**



### High Impact Calendar (GMT +1:00)

GMT +00:00		High Impact Expected News		
Date	Time	Announcement	Previous	Forecast
10-May	10th-15th	CH New Loans	3890B	1400B
10-May	1:30 PM	US CPI m/m	0.1%	0.4%
10-May	1:30 PM	US CPI y/y	5.0%	5.0%
10-May	1:30 PM	US Core CPI m/m	0.4%	0.3%
11-May	1:30 PM	US Core PPI m/m	-0.1%	0.2%
11-May	1:30 PM	US PPI m/m	-0.5%	0.3%
11-May	1:30 PM	US Unemployment Claims	242K	245K
12-May	3:00 PM	US Prelim UoM Consumer Sentiment	63.5	63.0

### Erebor Technicals

#### SPGSCI



#### GDXJ



#### **Comments:**

SPGSCI is following a descending channel since Jun 2022. This week the Index decreased even further and closed at the price of 545.58.

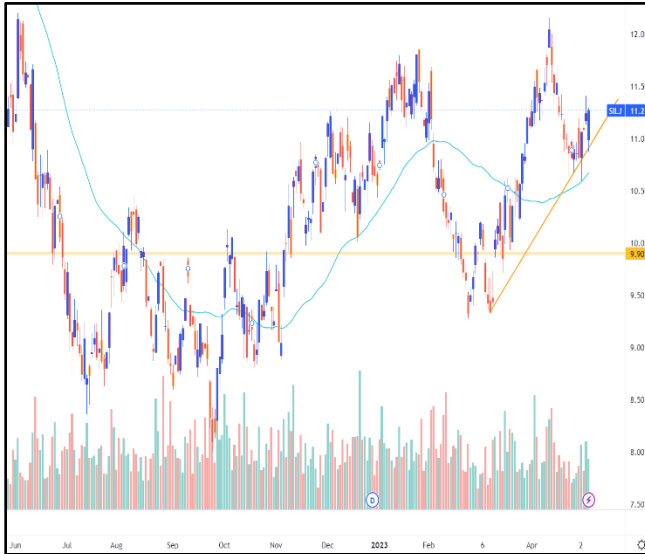
Commodities index is still moving in the channel, following a down trend. The price is moving close to the bottom border of the channel which seems to have found some support there this week.

#### **Comments:**

GDXJ moving in a bullish trend since September 2022. This week the ETF gained some ground and closed at the price of 41.81.

Gold Junior Miners are still moving on an uptrend. The ETF price is finding support at its previous High at the area of 40.0-41.0. We expect the price will manage to surpass the recent High of 43.89 in the following weeks to come.

### SILJ:



### COPX:



#### Comments:

SILJ is moving in a bullish trend since October 2022. This week the gained some ground and closed at the price of 11.27.

Silver Junior Miners are still moving on an uptrend. The ETF found support this week at the 50DMA and the phycological level of 50% Fibonacci.

#### Comments:

COPX is moving in a bullish trend since November 2022. This week the ETF gained some ground and closed at the price of 40.09.

Copper Miners are trying to stay on an uptrend with the price struggling to create new Higher High. The ETF seems to have found some support at the 50DMA this week and it's trying to move further upwards.

### Disclaimer

The information in this report is provided by [www.ereborinsights.com](http://www.ereborinsights.com) solely for informational purposes and should not be regarded as a recommendation to buy, sell or otherwise deal in any particular investment. The opinions expressed in this report are the opinions of the author and the information provided is drawn from sources believed to be reliable, but the accuracy or completeness of the information is not guaranteed, nor in providing it does Erebor Insights or persons assume any responsibility or liability whatsoever. The commentary is not to be construed as an offer to sell or a solicitation of an offer to buy any securities. Erebor Insights accepts no liability whatsoever for any loss arising from any use or reliance on this commentary or any of the information contained herein.

Also note that as markets change continuously, previously published information and data may not be current and should not be relied upon, and there may be delays, omissions, or inaccuracies in such information. Erebor Insights believes that all information contained in this report was correct at the time of going to press. However, they cannot accept liability for any errors

This information is distributed electronically through email. Should you wish to no longer receive electronic communications from us, please contact [info@ereborinsights.com](mailto:info@ereborinsights.com) and indicate in the subject line your full name and/or corporate entity name and that you wish to unsubscribe from receiving this electronic communication.