

NEWSLETTER

Argentina
Lithium
Closes US\$90
Million
Investment
by Stellantis
in ARS\$
Equivalent

TRX: Top Winner
ABAT: Top Loser



Tin went down this
week by 4.45%



Weekly Market Overview

Commodity	Weekly Chg.	Weekly Chg. %	Vol.
Gold	👇	-0.92%	0.39%
Silver	👆	3.92%	1.71%
Copper	👇	-4.17%	1.17%
Platinum	👇	-3.40%	1.71%
Aluminium	👇	-3.29%	1.09%
Palladium	👇	-7.12%	1.66%
Nickel	👇	-1.32%	1.26%
Lead	👇	-0.06%	2.33%
Tin	👇	-4.45%	1.93%
Zinc	👆	4.34%	2.67%

Gold Junior Miners
Negative

- Gold Indices: **Negative**
- Commodity Sentiment: **Neutral**
- Junior Miners Sentiment: **Negative**

Silver Junior Miners
Negative

- Silver Indices: **Negative**
- Commodity Sentiment: **Neutral**
- Junior Miners Sentiment: **Negative**

Copper Junior Miners
Negative

- Copper Indices: **Negative**
- Commodity Sentiment: **Neutral**
- Junior Miners Sentiment: **Negative**

Commodity Sentiment
Neutral

- Commodities Indices: **Neutral**
- Inflation: **Neutral**
- Consumer Sentiment: **Ext. Positive**

Junior Miners Sentiment
Neutral

- Gold Indices: **Negative**
- Silver Indices: **Negative**
- Copper Indices: **Negative**
- Commodity Sentiment: **Negative**

Our barometer is a way to gauge market movements and whether security instruments are fairly priced. The theory is based on the logic that excessive negativity tends to drive down the prices, and too much positivity tends to have the opposite effect.

Our barometer is a compilation of different indicators that measure some aspect of ETF and commodities behavior. They are comprised of market momentum, price strength, and stock price breadth. It tracks how much these individual indicators deviate from their average. The weightage of each factor is subject to past behavior and market conditions.

Top 5 ↗		Top 5 ↘	
Ticker	1 W Chg. %	Ticker	1 W Chg. %
TRX	14.75%	ABAT	-17.05%
PZG	11.70%	ATLX	-12.86%
NXPL	10.49%	VGZ	-12.77%
CTGO	6.39%	MP	-12.15%
DC	8.80%	IPI	-11.45%

Top 5 Weekly Private Placement News

- Argentina Lithium Closes US\$90 Million Investment: [Link](#)
- Thesis Gold Completes First Tranche of \$11.24 Million Financing: [Link](#)
- Rob McEwen & Crescat Capital Complete Strategic Investments in Goliath Resources Limited: [Link](#)
- Bear Creek Mining Announces Closing of C\$9.5 Million Bought Deal Financing: [Link](#)
- Fission Closes \$9.2 Million Bought Deal Financing: [Link](#)

16 Deals
>\$152M

[Find all the Private Placements and News HERE](#)

Top Junior Mining News

- Lithium Americas Closes Separation to Create Two Leading Lithium Companies: [Link](#)
- Suncor Energy to acquire TotalEnergies' Canadian operations for \$1.47-billion: [Link](#)
- Canadian Critical Minerals Inc. Sells Controlling Interest in Thierry Copper Mine: [Link](#)
- Newcrest Announces Update on Regulatory Approvals for Scheme: [Link](#)
- Namibia Critical Metals Announces Grant of Stock Options: [Link](#)

Opinions and Insights

- Gold Weekly Price Forecast: [Link](#)
- Silver Weekly Price Forecast: [Link](#)
- Commodity Weekly: [Link](#)
- Gold, Silver, Platinum Forecasts – Gold Tests \$1815 As Pullback Continues: [Link](#)

High Impact Calendar (GMT +1:00)

GMT +00:00		High Impact Expected News		
Date	Time	Announcement	Previous	Forecast
10/2/2023	5:00pm	US ISM Manufacturing PMI	47.6	47.8
10/2/2023	6:00pm	US Fed Chair Powell Speaks		
10/3/2023	5:00pm	US JOLTS Job Openings	8.83M	8.85M
10/4/2023	3:15pm	US ADP Non-Farm Employment Change	155K	155K
10/4/2023	5:00pm	US ISM Services PMI	54.5	53.5
10/5/2023	3:30pm	US Unemployment Claims		204K
10/6/2023	3:30pm	US Average Hourly Earnings m/m	0.20%	0.30%
10/6/2023	3:30pm	US Non-Farm Employment Change	187K	168K
10/6/2023	3:30pm	US Unemployment Rate	3.80%	3.70%

Erebor Technicals

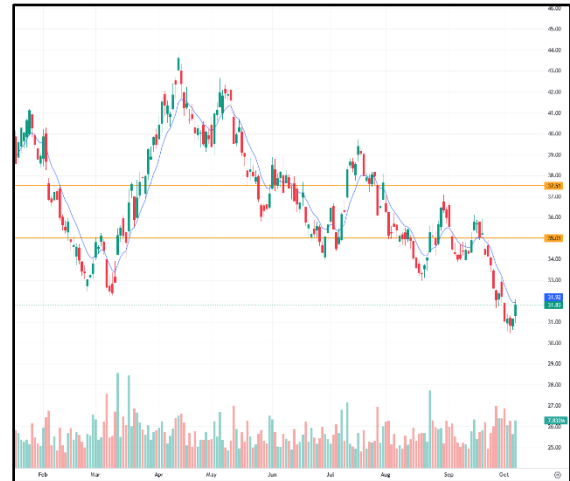
SPGSCI



Comments:

The S&P GSCI TR closed last week above its 200-day moving average, a bullish signal, but its stochastic indicator flashed a sell signal on Friday, suggesting that a pullback may be imminent. However, the index is still in an uptrend overall, and investors should consider buying on dips.

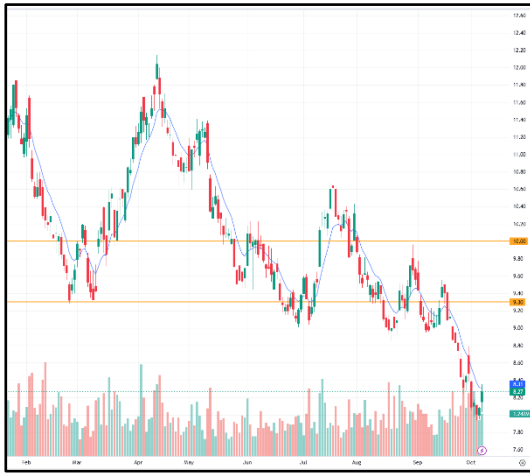
GDXJ



Comments:

GDXJ closed last week above its 50-day and 200-day moving averages, but its stochastic indicator flashed a sell signal on Friday. This suggests that the index may be due for a pullback in the near term, but the overall trend is still bullish. Investors should monitor the index closely and be prepared for a potential pullback, but they should also consider buying on dips.

SILJ:



COPX:



Comments:

SILJ closed last week above its key moving averages, but its stochastic indicator flashed a sell signal on Friday. This suggests that the index may be due for a pullback in the near term, but the overall trend is still bullish. Investors should monitor the index closely and consider buying on dips.

Comments:

COPX closed last week above its 50-day, 100-day, and 200-day moving averages, but its stochastic indicator flashed a sell signal on Friday. This suggests that the index may pull back in the near term, but the overall trend is still bullish. Investors could consider buying on dips or setting stop-loss orders to protect profits.

Disclaimer

The information in this report is provided by www.ereborinsights.com solely for informational purposes and should not be regarded as a recommendation to buy, sell or otherwise deal in any particular investment. The opinions expressed in this report are the opinions of the author and the information provided is drawn from sources believed to be reliable, but the accuracy or completeness of the information is not guaranteed, nor in providing it does Erebor Insights or persons assume any responsibility or liability whatsoever. The commentary is not to be construed as an offer to sell or a solicitation of an offer to buy any securities. Erebor Insights accepts no liability whatsoever for any loss arising from any use or reliance on this commentary or any of the information contained herein.

Also note that as markets change continuously, previously published information and data may not be current and should not be relied upon, and there may be delays, omissions, or inaccuracies in such information. Erebor Insights believes that all information contained in this report was correct at the time of going to press. However, they cannot accept liability for any errors

This information is distributed electronically through email. Should you wish to no longer receive electronic communications from us, please contact info@ereborinsights.com and indicate in the subject line your full name and/or corporate entity name and that you wish to unsubscribe from receiving this electronic communication.