

NEWSLETTER

Eldorado Gold
Closes €680M
Project
Financing
Facility for the
Development
of Skouries

ANTMF: Top Winner
EORBF: Top Loser



Silver went up this
week by 4.51%



Copper Junior Miners

Neutral



- Copper Indices: **Neutral**
- Commodity Sentiment: **Neutral**
- Junior Miners Sentiment: **Positive**

Weekly Market Overview

Commodity	Weekly Chg.	Weekly Chg. %	Vol.
Gold	↗	1.95%	1.04%
Silver	↗	4.51%	2.13%
Copper	↘	-1.11%	1.03%
Platinum	↗	2.02%	2.13%
Aluminium	↘	-2.65%	0.84%
Palladium	↗	0.72%	1.85%
Nickel	↘	-2.60%	1.15%
Lead	↘	-0.83%	0.44%
Tin	↘	-4.24%	2.46%
Zinc	↘	-3.81%	0.83%

Gold Junior Miners

Positive

- Gold Indices: **Positive**
- Commodity Sentiment: **Neutral**
- Junior Miners Sentiment: **Positive**

Silver Junior Miners

Positive

- Silver Indices: **Positive**
- Commodity Sentiment: **Neutral**
- Junior Miners Sentiment: **Positive**

Copper Junior Miners

Neutral

- Copper Indices: **Neutral**
- Commodity Sentiment: **Neutral**
- Junior Miners Sentiment: **Positive**

Commodity Sentiment

Neutral

- Commodities Indices: **Neutral**
- Inflation: **Positive**
- Consumer Sentiment: **Neutral**

Junior Miners Sentiment

Positive

- Gold Indices: **Positive**
- Silver Indices: **Positive**
- Copper Indices: **Neutral**
- Commodity Sentiment: **Neutral**

Our barometer is a way to gauge market movements and whether security instruments are fairly priced. The theory is based on the logic that excessive negativity tends to drive down the prices, and too much positivity tends to have the opposite effect.

Our barometer is a compilation of different indicators that measure some aspect of ETF and commodities behavior. They are comprised of market momentum, price strength, and stock price breadth. It tracks how much these individual indicators deviate from their average. The weightage of each factor is subject to past behavior and market conditions.

Top 5 ↗		Top 5 ↘	
Ticker	1 W Chg. %	Ticker	1 W Chg. %
ANTMF	646.32%	EORBF	-90.00%
TTEXF	581.82%	SVTNF	-83.96%
OSCI	157.14%	EGRAF	-68.02%
MAGE	100.00%	EVGUF	-62.50%
STHFF	72.06%	LSMG	-61.28%

Top 5 Weekly Private Placement News

- Eldorado Gold Closes €680M Project Financing Facility: [Link](#)
- G Mining Ventures Completes First Draw on \$250M Gold Stream: [Link](#)
- Asante Announces Closing of C\$27M Non-Brokered Private Placement: [Link](#)
- Labrador Uranium Completes C\$12.6M Subscription Receipt Financing: [Link](#)
- Imagine Lithium Announces a Private Placement to Raise \$9.1M: [Link](#)

29 Deals
>\$1,116.9M

[Find all the Private Placements and News HERE](#)

Top Junior Mining News

- Hecla Signs Definitive Agreement To Acquire ATAC Resources: [Link](#)
- IMPACT Silver Closes Acquisition of the High-Grade Plomosas Zinc-Lead-Silver Mine, Mexico: [Link](#)
- Teck and Agnico Eagle Announce Completion of the San Nicolás Copper-Zinc Project Joint Venture: [Link](#)

Opinions and Insights

- Gold Weekly Price Forecast: [Link](#)
- Silver Weekly Price Forecast: [Link](#)
- Time Could Be Running Out to Buy Gold at These Prices: [Link](#)
- Central banks are buying gold at a record pace so far in 2023: [Link](#)
- What's up with gold?: [Link](#)
- Texas moves to create gold-backed digital currency: [Link](#)
- IMF Chief Calls on Central Banks to Continue Inflation Fight: [Link](#)
- There's A Wall of Corporate Debt Maturing: [Link](#)
- Fed Traders Boost May Hike Bets After Better-Than-Expected Jobs: [Link](#)

"Let me show you how to make money" 🤖



High Impact Calendar (GMT +1:00)

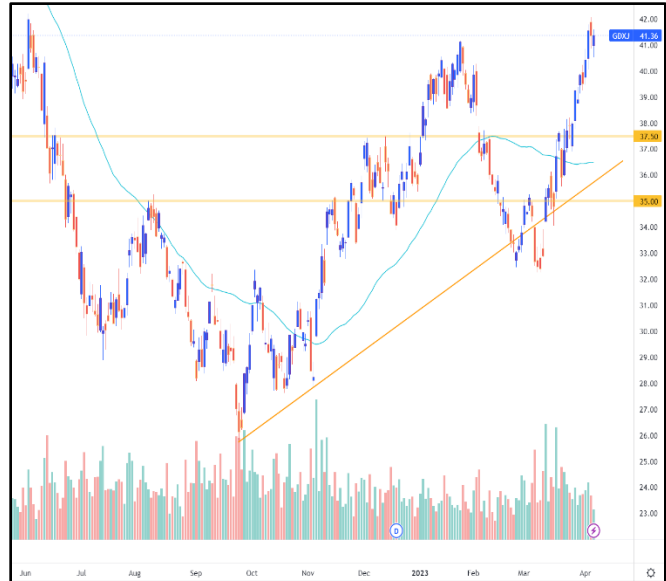
GMT +00:00		High Impact Expected News		
Date	Time	Announcement	Previous	Forecast
10-Apr	Tentative	CH New Loans	1810B	3300B
12-Apr	1:30 PM	US CPI m/m	0.4%	0.2%
12-Apr	1:30 PM	US CPI y/y	6.0%	5.2%
12-Apr	1:30 PM	US Core CPI m/m	0.5%	0.4%
12-Apr	7:00 PM	US FOMC Meeting Minutes	-	-
13-Apr	1:30 PM	US Core PPI m/m	0.0%	0.3%
13-Apr	1:30 PM	US PPI m/m	-0.1%	0.0%
13-Apr	1:30 PM	US Unemployment Claims	228K%	216K%
14-Apr	1:30 PM	US Core Retail Sales m/m	-0.1%	-0.4%
14-Apr	1:30 PM	US Retail Sales m/m	-0.4%	-0.5%
14-Apr	3:00 PM	US Prelim UoM Consumer Sentiment	62.0	61.8

Erebor Technicals

SPGSCI



GDXJ



Comments:

SPGSCI is following a descending channel since Jun 2022. This week the Index increased furthermore up and closed at the price of 588.70.

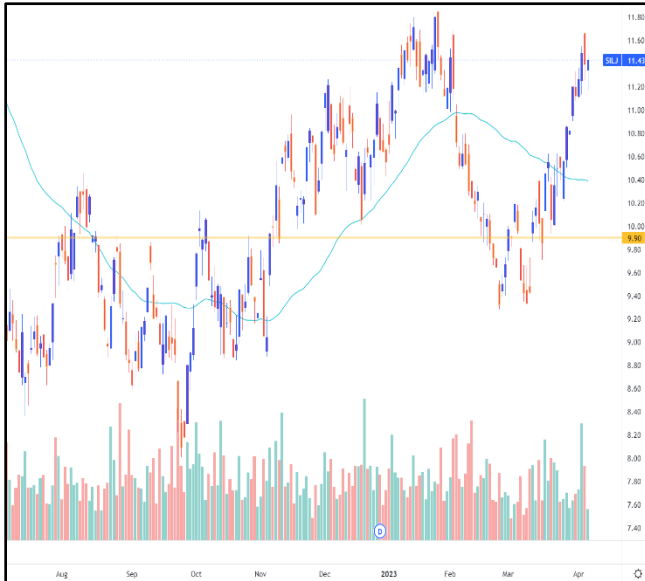
Commodities index is still moving in the channel, following a down trend and it looks like the price will find some resistance next week at the crucial are of 600.00 and at the upper edge of the trendline.

Comments:

GDXJ moving in a bullish trend since September 2022. This week the ETF increased furthermore up and closed at the price of 41.36.

Looks like Gold Junior Miners are trying to create a new Higher High and surpass its previous one at the price level of 41.00. We expect the price to either find some resistance at this area or increase for now and re-test later on.

SILJ:



COPX:



Comments:

SILJ is moving in a bullish trend since October 2022. This week the ETF increased furthermore up and closed at the price of 11.43.

Looks like Silver Junior Miners are trying to create a new Higher High and surpass its previous one at the price level of 11.80. We expect the price to either find some resistance at this area or increase for now

Comments:

COPX is moving in a bullish trend since November 2022. This week the ETF increased furthermore up and closed at the price of 38.64.

Copper Miners price found some support at the crucial level of 38.00 this week and it looks like the ETF is trying to create a Higher High.

Disclaimer

The information in this report is provided by www.ereborinsights.com solely for informational purposes and should not be regarded as a recommendation to buy, sell or otherwise deal in any particular investment. The opinions expressed in this report are the opinions of the author and the information provided is drawn from sources believed to be reliable, but the accuracy or completeness of the information is not guaranteed, nor in providing it does Erebor Insights or persons assume any responsibility or liability whatsoever. The commentary is not to be construed as an offer to sell or a solicitation of an offer to buy any securities. Erebor Insights accepts no liability whatsoever for any loss arising from any use or reliance on this commentary or any of the information contained herein.

Also note that as markets change continuously, previously published information and data may not be current and should not be relied upon, and there may be delays, omissions, or inaccuracies in such information. Erebor Insights believes that all information contained in this report was correct at the time of going to press. However, they cannot accept liability for any errors

This information is distributed electronically through email. Should you wish to no longer receive electronic communications from us, please contact info@ereborinsights.com and indicate in the subject line your full name and/or corporate entity name and that you wish to unsubscribe from receiving this electronic communication.