

NEWSLETTER

Eldorado
Gold
Announces
Closing of
C\$135M
Bought Deal
Financing

SLMFF: Top Winner
HEGLF: Top Loser



Palladium went down
this week by 8.62%



Copper Junior Miners

Neutral




- Copper Indices: Neutral
- Commodity Sentiment: Neutral
- Junior Miners Sentiment: Neutral

Weekly Market Overview

Commodity	Weekly Chg.	Weekly Chg. %	Vol.
Gold	↗	0.68%	1.10%
Silver	↗	2.97%	1.78%
Copper	↗	0.37%	1.18%
Platinum	↗	0.30%	0.73%
Aluminium	↘	-0.56%	1.20%
Palladium	↘	-8.62%	1.53%
Nickel	↘	-0.42%	0.74%
Lead	↗	2.47%	1.25%
Tin	↗	2.88%	2.38%
Zinc	↗	4.13%	1.39%

Gold Junior Miners


Neutral



- Gold Indices: **Neutral**
- Commodity Sentiment: **Neutral**
- Junior Miners Sentiment: **Neutral**

Silver Junior Miners


Negative



- Silver Indices: **Negative**
- Commodity Sentiment: **Neutral**
- Junior Miners Sentiment: **Neutral**

Copper Junior Miners


Neutral



- Copper Indices: **Neutral**
- Commodity Sentiment: **Neutral**
- Junior Miners Sentiment: **Neutral**

Commodity Sentiment


Neutral



- Commodities Indices: **Neutral**
- Inflation: **Positive**
- Consumer Sentiment: **Positive**

Junior Miners Sentiment

Neutral



- Gold Indices: **Neutral**
- Silver Indices: **Negative**
- Copper Indices: **Neutral**
- Commodity Sentiment: **Neutral**

Our barometer is a way to gauge market movements and whether security instruments are fairly priced. The theory is based on the logic that excessive negativity tends to drive down the prices, and too much positivity tends to have the opposite effect.

Our barometer is a compilation of different indicators that measure some aspect of ETF and commodities behavior. They are comprised of market momentum, price strength, and stock price breadth. It tracks how much these individual indicators deviate from their average. The weightage of each factor is subject to past behavior and market conditions.

Top 5 ↗		Top 5 ↘	
Ticker	1 W Chg. %	Ticker	1 W Chg. %
SLMFF	303.69%	HEGLF	-79.49%
EMSKD	167.86%	OREAF	-72.90%
ANTMF	150.00%	BLXX	-66.00%
MMMM	115.45%	SIZYF	-65.18%
CATTF	114.81%	PKREF	-58.33%

Top 5 Weekly Private Placement News

- Artemis Gold Receives Initial Deposit Under Silver Stream Agreement: [Link](#)
- Eldorado Gold Announces Closing of C\$135M Bought Deal Financing: [Link](#)
- FPX Nickel Announces Completion of Resultant Private Placement: [Link](#)
- Bravo Announces Completion of Public Offering For \$20M: [Link](#)
- Gladiator Metals Announces Brokered Private Placement of up to \$7M: [Link](#)

21 Deals
>\$328.5M

[Find all the Private Placements and News HERE](#)

Top Junior Mining News

- Benchmark Metals and Thesis Gold Announce Merger to Create Premier Precious Metals Project: [Link](#)
- enCore Energy Enters Definitive Agreement for the Sale of the Marquez-Juan Tafoya Project: [Link](#)
- Westgold Announces Takeover Offer From Musgrave: [Link](#)

Opinions and Insights

- Gold Weekly Price Forecast: [Link](#)
- Silver Weekly Price Forecast: [Link](#)
- US CPI, Fed, ECB, BOJ and the Week Ahead: [Link](#)
- Technical Update - Copper, Gold & Silver: [Link](#)
- SNB's Fight to Tame Inflation Not Yet Done: [Link](#)
- Fed Is Set to Pause and Assess the Effect of Rate Hikes: [Link](#)
- Fed likely to skip, but it's going to be close: [Link](#)
- Copper set for second weekly gain as China measures lift appetite: [Link](#)

**My trade idea after using
technical analysis**



High Impact Calendar (GMT +1:00)

GMT +00:00		High Impact Expected News		
Date	Time	Announcement	Previous	Forecast
13-Jun	1:30 PM	US CPI m/m	0.4%	0.2%
13-Jun	1:30 PM	US CPI y/y	4.9%	4.1%
13-Jun	1:30 PM	US Core CPI m/m	0.4%	0.4%
14-Jun	1:30 PM	US Core PPI m/m	0.2%	0.2%
14-Jun	1:30 PM	US PPI m/m	0.2%	-0.1%
14-Jun	7:00 PM	US FOMC Statement	-	-
14-Jun	7:00 PM	US Federal Funds Rate	5.25%	5.25%
14-Jun	7:30 PM	US FOMC Press Conference	-	-
15-Jun	1:30 PM	US Core Retail Sales m/m	0.4%	0.1%
15-Jun	1:30 PM	US Empire State Manufacturing Index	-31.8	-14.5
15-Jun	1:30 PM	US Philly Fed Manufacturing Index	-10.4	-12.1
15-Jun	1:30 PM	US Retail Sales m/m	0.4%	-0.1%
15-Jun	1:30 PM	US Unemployment Claims	261K	248K
15-Jun	1:45 PM	EZ ECB Press Conference	-	-

Erebor Technicals

SPGSCI

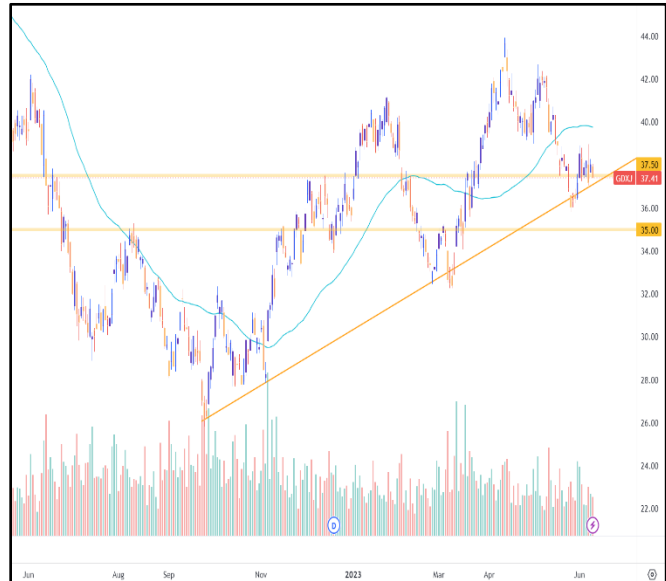


Comments:

SPGSCI is following a descending channel since Jun 2022. This week the Index further decreased and closed at the price of 539.82.

Commodities index is still moving in the channel, following a down trend. The price keeps finding resistance at the crucial area of 555.00 and it's moving closer to the bottom border of the channel. The last few weeks the price keeps fluctuating in the same area.

GDXJ

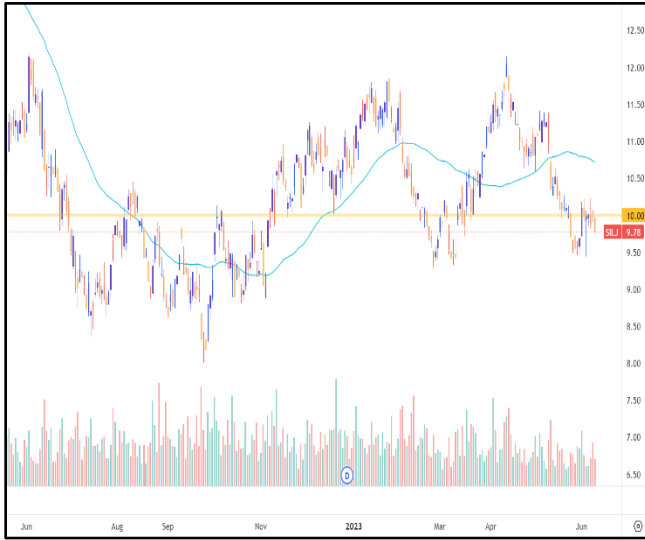


Comments:

GDXJ moving in a bullish trend since September 2022. This week the ETF slightly decreased and closed at the price of 37.41.

Gold Junior Miners are trying to stay on an uptrend. The ETF price is still moving close to the crucial area around 37.50, where it keeps finding support at this level too. Patience is needed to see how the price will move in the next few weeks.

SILJ:



COPX:



Comments:

SILJ is trying to form a trend. This week the ETF slightly decreased and closed at the price of 9.78.

Silver Junior Miners price is still moving close to the crucial area around 10.00, where it keeps finding resistance at this level too. Patience is needed to see how the price will move in the next few weeks.

Comments:

COPX is moving in a bullish trend since November 2022. This week the ETF further increased and closed at the price of 37.60. Copper Miners are trying to stay on an uptrend. The ETF price is moving between the crucial area of 35.50 and 38.00 and close to the 50DMA. The price found some resistance from the crucial level of 38.00. Patience is needed to see how the price will move in the next few weeks.

Disclaimer

The information in this report is provided by www.ereborinsights.com solely for informational purposes and should not be regarded as a recommendation to buy, sell or otherwise deal in any particular investment. The opinions expressed in this report are the opinions of the author and the information provided is drawn from sources believed to be reliable, but the accuracy or completeness of the information is not guaranteed, nor in providing it does Erebor Insights or persons assume any responsibility or liability whatsoever. The commentary is not to be construed as an offer to sell or a solicitation of an offer to buy any securities. Erebor Insights accepts no liability whatsoever for any loss arising from any use or reliance on this commentary or any of the information contained herein.

Also note that as markets change continuously, previously published information and data may not be current and should not be relied upon, and there may be delays, omissions, or inaccuracies in such information. Erebor Insights believes that all information contained in this report was correct at the time of going to press. However, they cannot accept liability for any errors

This information is distributed electronically through email. Should you wish to no longer receive electronic communications from us, please contact info@ereborinsights.com and indicate in the subject line your full name and/or corporate entity name and that you wish to unsubscribe from receiving this electronic communication.