

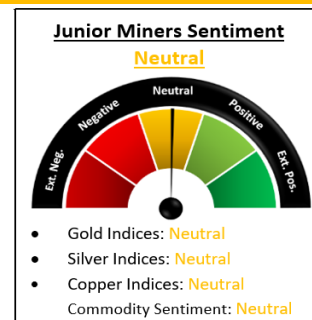
NEWSLETTER

Seabridge to Raise US\$150 Million under KSM Net Smelter Royalty Agreement with Sprott Funds to be Used Towards Achieving 'Substantially Started' Status

RJKAF: Top Winner
GSDC: Top Loser



Silver went down this week by 6.82%



Weekly Market Overview

Commodity	Weekly Chg.	Weekly Chg. %	Vol.
Gold	👉	-0.26%	0.55%
Silver	👎	-6.82%	2.26%
Copper	👉	-2.92%	1.28%
Platinum	👉	-0.38%	2.37%
Aluminium	👉	-3.20%	1.73%
Palladium	👈	1.20%	4.18%
Nickel	👎	-7.01%	2.15%
Lead	👉	-0.46%	0.79%
Tin	👉	-4.71%	2.00%
Zinc	👉	-3.67%	1.82%

Gold Junior Miners

Neutral

- Gold Indices: **Neutral**
- Commodity Sentiment: **Neutral**
- Junior Miners Sentiment: **Neutral**

Silver Junior Miners

Neutral

- Silver Indices: **Neutral**
- Commodity Sentiment: **Neutral**
- Junior Miners Sentiment: **Neutral**

Copper Junior Miners

Neutral

- Copper Indices: **Neutral**
- Commodity Sentiment: **Neutral**
- Junior Miners Sentiment: **Neutral**

Commodity Sentiment

Neutral

- Commodities Indices: **Neutral**
- Inflation: **Positive**
- Consumer Sentiment: **Positive**

Junior Miners Sentiment

Neutral

- Gold Indices: **Neutral**
- Silver Indices: **Neutral**
- Copper Indices: **Neutral**
- Commodity Sentiment: **Neutral**

Our barometer is a way to gauge market movements and whether security instruments are fairly priced. The theory is based on the logic that excessive negativity tends to drive down the prices, and too much positivity tends to have the opposite effect.

Our barometer is a compilation of different indicators that measure some aspect of ETF and commodities behavior. They are comprised of market momentum, price strength, and stock price breadth. It tracks how much these individual indicators deviate from their average. The weightage of each factor is subject to past behavior and market conditions.

Top 5 ⬆		Top 5 ⬇	
Ticker	1 W Chg. %	Ticker	1 W Chg. %
RJKAF	372.44%	GSDC	-99.40%
CYNXF	230.00%	AMNL	-82.35%
MSLVF	149.80%	RYES	-77.50%
PEMSF	119.40%	SIREF	-56.37%
PEMIF	115.78%	BRGOD	-55.56%

Top 5 Weekly Private Placement News

- Seabridge to Raise \$150M under KSM Net Smelter Royalty Agreement: [Link](#)
- Nevada Announces Financing Package Supporting Mine Ramp-Up: [Link](#)
- Western Closes Second Tranche of Loan Transaction With Appian: [Link](#)
- Prime Mining Receives \$28M From Warrant Acceleration Program: [Link](#)
- Lion One Announces Closing Of \$27M Bought Deal Public Offering: [Link](#)

39 Deals
>\$520.1M

[Find all the Private Placements and News HERE](#)

Top Junior Mining News

- Steppe Gold Ltd. Signs Arrangement Agreement to Acquire Anacortes Mining Corp: [Link](#)
- Fortuna to strengthen its presence in West Africa with the acquisition of Chesser Resources: [Link](#)
- Allkem and Livent to Create a Leading Global Integrated Lithium Chemicals Producer: [Link](#)
- Newcrest Enters into Binding Scheme Implementation Deed with Newmont: [Link](#)
- Sandstorm Gold Royalties Provides Updates on Key Development Projects: [Link](#)

Opinions and Insights

- Gold Weekly Price Forecast: [Link](#)
- Silver Weekly Price Forecast: [Link](#)
- Weekly Forex Forecast: [Link](#)
- The Global Week Ahead: It's Only Natural: [Link](#)
- New York Cements Itself as the Gold Mining Capital of the World: [Link](#)
- Three key risks to the global outlook: [Link](#)
- Gold Rides Higher on Recession Fears: [Link](#)
- Our view on the major central banks: [Link](#)
- Gold Is at Risk of a Deeper Retracement: [Link](#)
- Copper weakness drags silver lower as gold maintains stability: [Link](#)

My broker after I deposited another monthly salary

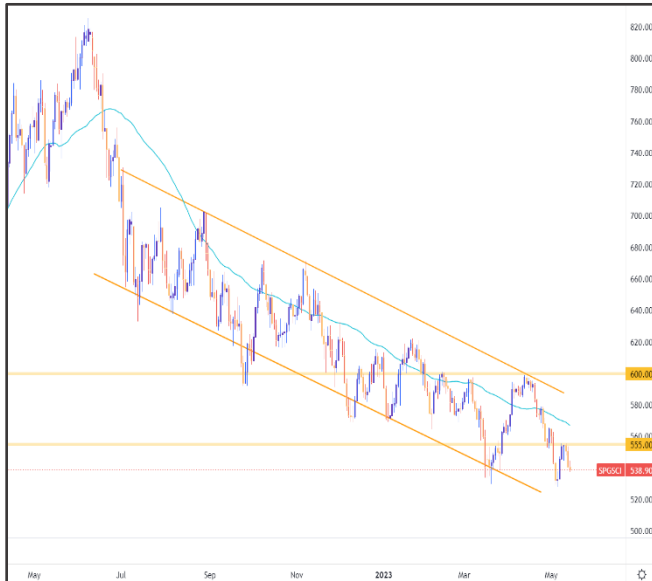


High Impact Calendar (GMT +1:00)

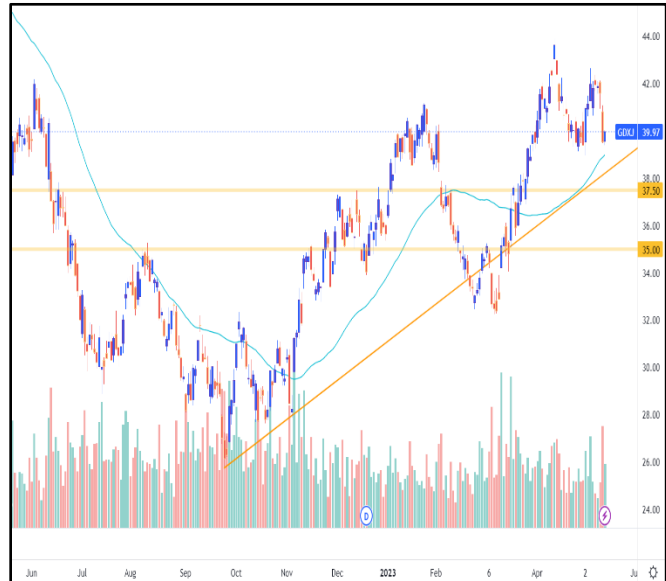
GMT +00:00		High Impact Expected News		
Date	Time	Announcement	Previous	Forecast
15-May	3:30 PM	US Empire State Manufacturing Index	10.8	-1.9
16-May	3:30 PM	US Core Retail Sales m/m	-0.8%	0.3%
16-May	3:30 PM	US Retail Sales m/m	-1.0%	0.7%
18-May	3:30 PM	US Philly Fed Manufacturing Index	-31.3	-18.2
18-May	3:30 PM	US Unemployment Claims	264K	260K
19-May	6:00 PM	US Fed Chair Powell Speaks	-	-

Erebor Technicals

SPGSCI



GDXJ



Comments:

SPGSCI is following a descending channel since Jun 2022. This week the Index decreased even further and closed at the price of 538.90.

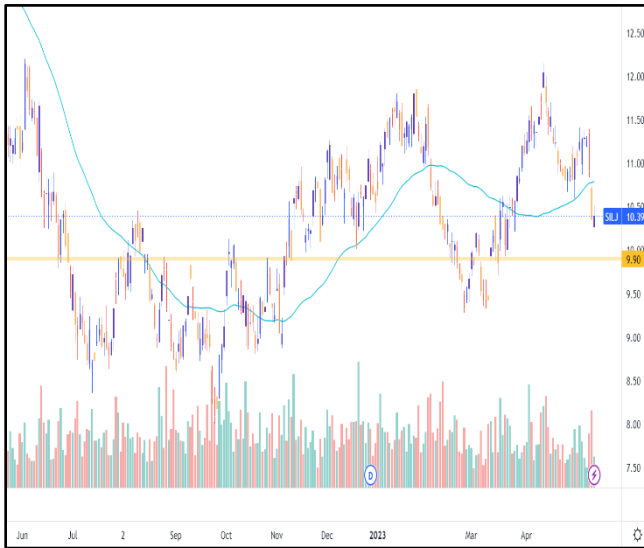
Commodities index is still moving in the channel, following a down trend. The price found resistance at the crucial area of 555.00 and it's moving close to the bottom border of the channel.

Comments:

GDXJ moving in a bullish trend since September 2022. This week the ETF decreased and closed at the price of 39.97.

Gold Junior Miners are still moving on an uptrend. The ETF price is finding support at its previous High at the area of 40.0-41.0 (also a Fib Level around 40.0). We expect the price will manage to surpass the recent High of 43.89 in the following weeks to come.

SILJ:



COPX:



Comments:

SILJ is moving in a bullish trend since October 2022. This week the ETF decreased and closed at the price of 10.39. Silver Junior Miners are still moving on an uptrend. The ETF affected by the market news, went further down, closer to the crucial level of 10.0, and it seems like the SILJ price is looking for support. Patience will be the key for the next few weeks.

Comments:

COPX is moving in a bullish trend since November 2022. This week the ETF decreased and closed at the price of 37.12. Copper Miners are trying to stay on an uptrend with the price struggling to create new Higher High. The ETF was affected by this week's market news, and it seems like the COPX price is looking for a strong support level.

Disclaimer

The information in this report is provided by www.ereborinsights.com solely for informational purposes and should not be regarded as a recommendation to buy, sell or otherwise deal in any particular investment. The opinions expressed in this report are the opinions of the author and the information provided is drawn from sources believed to be reliable, but the accuracy or completeness of the information is not guaranteed, nor in providing it does Erebor Insights or persons assume any responsibility or liability whatsoever. The commentary is not to be construed as an offer to sell or a solicitation of an offer to buy any securities. Erebor Insights accepts no liability whatsoever for any loss arising from any use or reliance on this commentary or any of the information contained herein.

Also note that as markets change continuously, previously published information and data may not be current and should not be relied upon, and there may be delays, omissions, or inaccuracies in such information. Erebor Insights believes that all information contained in this report was correct at the time of going to press. However, they cannot accept liability for any errors

This information is distributed electronically through email. Should you wish to no longer receive electronic communications from us, please contact info@ereborinsights.com and indicate in the subject line your full name and/or corporate entity name and that you wish to unsubscribe from receiving this electronic communication.