

# NEWSLETTER

Filo  
Mining  
Closes  
C\$130M  
Private  
Placement

PRMO: Top Winner  
HREEF: Top Loser



Nickel went up this  
week by 8.20%



### Commodity Sentiment

Neutral




- Commodities Indices: **Neutral**
- Inflation: **Neutral**
- Consumer Sentiment: **Positive**

### Weekly Market Overview

Commodity	Weekly Chg.	Weekly Chg. %	Vol.
Gold	↘	-0.10%	0.60%
Silver	↘	-0.37%	1.28%
Copper	↗	2.23%	0.83%
Platinum	↘	-2.57%	1.00%
Aluminium	↗	0.03%	0.53%
Palladium	↗	7.33%	1.47%
Nickel	↗	8.20%	1.46%
Lead	↗	5.53%	0.66%
Tin	↗	4.63%	3.62%
Zinc	↗	3.65%	1.07%

#### Gold Junior Miners


**Neutral**



- Gold Indices: **Neutral**
- Commodity Sentiment: **Neutral**
- Junior Miners Sentiment: **Neutral**

#### Silver Junior Miners


**Negative**



- Silver Indices: **Negative**
- Commodity Sentiment: **Neutral**
- Junior Miners Sentiment: **Neutral**

#### Copper Junior Miners


**Neutral**



- Copper Indices: **Neutral**
- Commodity Sentiment: **Neutral**
- Junior Miners Sentiment: **Neutral**

#### Commodity Sentiment


**Neutral**



- Commodities Indices: **Neutral**
- Inflation: **Neutral**
- Consumer Sentiment: **Positive**

#### Junior Miners Sentiment

**Neutral**



- Gold Indices: **Neutral**
- Silver Indices: **Negative**
- Copper Indices: **Neutral**
- Commodity Sentiment: **Neutral**

Our barometer is a way to gauge market movements and whether security instruments are fairly priced. The theory is based on the logic that excessive negativity tends to drive down the prices, and too much positivity tends to have the opposite effect.

Our barometer is a compilation of different indicators that measure some aspect of ETF and commodities behavior. They are comprised of market momentum, price strength, and stock price breadth. It tracks how much these individual indicators deviate from their average. The weightage of each factor is subject to past behavior and market conditions.

Top 5 ↗		Top 5 ↘	
Ticker	1 W Chg. %	Ticker	1 W Chg. %
PRMO	900.00%	HREEF	-97.18%
EORBF	900.00%	MLKKF	-90.00%
NXSGF	150.00%	ANTMF	-82.60%
ZHUD	122.22%	ATMTF	-81.50%
TTEXF	89.17%	EGRAF	-75.00%

### Top 5 Weekly Private Placement News

- Filo Mining Closes C\$130M Private Placement: [Link](#)
- Eldorado Gold Announces Closing of C\$81.5M Strategic Investment: [Link](#)
- Avalon Announces C\$63M Strategic Investment by Sibelco: [Link](#)
- Artemis Announces Phase 1 Dev. of Blackwater & \$40M Funding: [Link](#)
- Talisker Announces \$31.25M Financing with Sprott Resources: [Link](#)

**22 Deals**  
**>\$360.8M**

[Find all the Private Placements and News HERE](#)

### Top Junior Mining News

- Hudbay Arrangement with Copper Mountain Mining Overwhelmingly Supported by Shareholders: [Link](#)
- Appian announces sale of Brazilian companies to ACG for \$1.065B: [Link](#)
- Metals Acquisition Limited Closes Purchase of the CSA Copper Mine: [Link](#)
- Avalon Announces C\$63M Investment by Sibelco to Create a Lithium Partnership: [Link](#)
- Sibanye-Stillwater takes on New Century zinc mine: [Link](#)

### Opinions and Insights

- Gold Weekly Price Forecast: [Link](#)
- Silver Weekly Price Forecast: [Link](#)
- Week Ahead: [Link](#)
- A big move in gold price is coming after weeks of neutral stance: [Link](#)
- Copper poised for 3rd weekly gain on softer dollar: [Link](#)
- China's May aluminium imports up slightly on prior year: [Link](#)
- The federal funds rate: Back to the drawing board: [Link](#)
- The federal funds rate: Back to the drawing board: [Link](#)
- US Consumer Year-Ahead Inflation Expectations Lowest Since 21: [Link](#)
- Billionaire Reuben Brothers Sue Trafigura Over Nickel Fraud: [Link](#)

**\*Cucumbers can help reduce stress\***

**Traders:**



### High Impact Calendar (GMT +1:00)

GMT +00:00		High Impact Expected News		
Date	Time	Announcement	Previous	Forecast
21-Jun	3:00 PM	US Fed Chair Powell Testifies	-	-
22-Jun	1:30 PM	US Unemployment Claims	262K	256K
22-Jun	3:00 PM	US Fed Chair Powell Testifies	-	-
23-Jun	2:45 PM	US Flash Manufacturing PMI	48.4	48.5
23-Jun	2:45 PM	US Flash Services PMI	54.9	54

### Erebor Technicals

#### SPGSCI

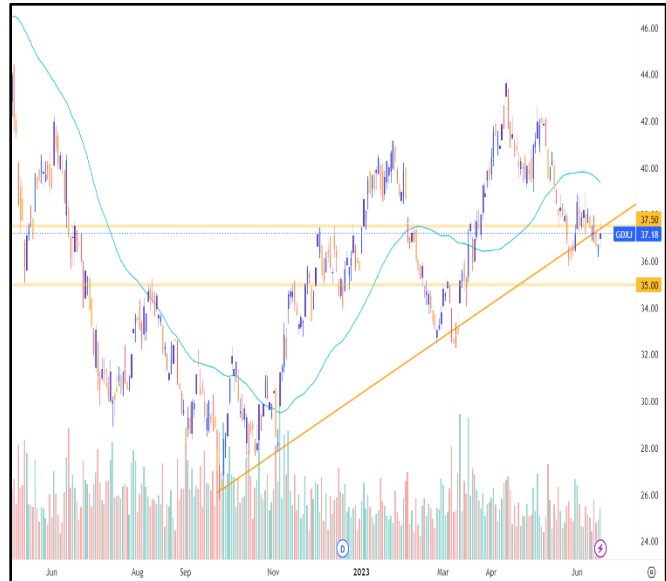


#### **Comments:**

SPGSCI is following a descending channel since Jun 2022. This week the Index increased and closed at the price of 557.23.

Commodities index is still moving in the channel, following a down trend. The price keeps finding resistance at the crucial area of 555.00 and this week intersected with the 50DMA.

#### GDXJ

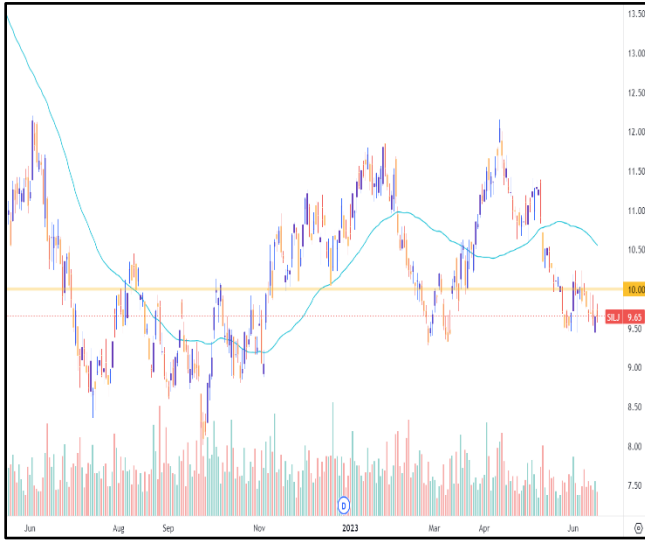


#### **Comments:**

GDXJ moving in a bullish trend since September 2022. This week the ETF slightly decreased and closed at the price of 37.18.

Gold Junior Miners are trying to stay on an uptrend. The ETF price is still moving close to the crucial area around 37.50, where it seems to work as a resistance level this week. Patience is needed to see how the price will move in the next few weeks.

### SILJ:



### COPX:



#### Comments:

SILJ is trying to form a trend. This week the ETF slightly decreased and closed at the price of 9.65.

Silver Junior Miners price is still moving close to the crucial area around 10.00, where it keeps finding resistance at this level too. Patience is needed to see how the price will move in the next few weeks.

#### Comments:

COPX is moving in a bullish trend since November 2022. This week the ETF increased and closed at the price of 39.56.

Copper Miners are trying to stay on an uptrend. The ETF price managed to break through the crucial area of 38.00. The price seems that found some support at the 38.00 and 50DMA this week and managed to gain some serious ground.

### Disclaimer

The information in this report is provided by [www.ereborinsights.com](http://www.ereborinsights.com) solely for informational purposes and should not be regarded as a recommendation to buy, sell or otherwise deal in any particular investment. The opinions expressed in this report are the opinions of the author and the information provided is drawn from sources believed to be reliable, but the accuracy or completeness of the information is not guaranteed, nor in providing it does Erebor Insights or persons assume any responsibility or liability whatsoever. The commentary is not to be construed as an offer to sell or a solicitation of an offer to buy any securities. Erebor Insights accepts no liability whatsoever for any loss arising from any use or reliance on this commentary or any of the information contained herein.

Also note that as markets change continuously, previously published information and data may not be current and should not be relied upon, and there may be delays, omissions, or inaccuracies in such information. Erebor Insights believes that all information contained in this report was correct at the time of going to press. However, they cannot accept liability for any errors

This information is distributed electronically through email. Should you wish to no longer receive electronic communications from us, please contact [info@ereborinsights.com](mailto:info@ereborinsights.com) and indicate in the subject line your full name and/or corporate entity name and that you wish to unsubscribe from receiving this electronic communication.