

NEWSLETTER

LITHIUM
 AMERICAS
 Announces
 Initial
 Closing of
 \$650M
 Investment

SPGX: Top Winner
 AEXE: Top Loser



Palladium went down
 by 3.07% last week



Copper Junior Miners

Neutral



- Copper Indices: Neutral
- Commodity Sentiment: Neutral
- Junior Miners Sentiment: Negative

Weekly Market Overview

Commodity	Weekly Chg.	Weekly Chg. %	Vol.
Gold	↘	-1.27%	0.67%
Silver	↘	-1.18%	0.60%
Copper	↘	-0.39%	0.81%
Platinum	↘	-2.90%	1.66%
Aluminium	↘	-2.38%	0.93%
Palladium	↘	-3.07%	4.32%
Nickel	↘	-0.99%	2.93%
Lead	↗	0.72%	1.21%
Tin	↘	-0.65%	1.80%
Zinc	↗	0.06%	2.22%

Gold Junior Miners

Negative

- Gold Indices: **Negative**
- Commodity Sentiment: **Neutral**
- Junior Miners Sentiment: **Negative**

Silver Junior Miners

Negative

- Silver Indices: **Negative**
- Commodity Sentiment: **Neutral**
- Junior Miners Sentiment: **Negative**

Copper Junior Miners

Neutral

- Copper Indices: **Neutral**
- Commodity Sentiment: **Neutral**
- Junior Miners Sentiment: **Negative**

Commodity Sentiment

Neutral

- Commodities Indices: **Neutral**
- Inflation: **Ext. Positive**
- Consumer Sentiment: **Positive**

Junior Miners Sentiment

Negative

- Gold Indices: **Negative**
- Silver Indices: **Negative**
- Copper Indices: **Neutral**
- Commodity Sentiment: **Neutral**
- Momentum: **Neutral**

Our barometer is a way to gauge market movements and whether security instruments are fairly priced. The theory is based on the logic that excessive negativity tends to drive down the prices, and too much positivity tends to have the opposite effect.

Our barometer is a compilation of different indicators that measure some aspect of ETF and commodities behavior. They are comprised of market momentum, price strength, and stock price breadth. It tracks how much these individual indicators deviate from their average. The weightage of each factor is subject to past behavior and market conditions.

Top 5 ↗		Top 5 ↘	
Ticker	1 W Chg. %	Ticker	1 W Chg. %
SPGX	828.00%	AEXE	-99.00%
MGIDF	620.72%	LSMLF	-93.75%
TTNF	555.74%	GDPHF	-81.82%
PCRAF	298.77%	HWKRF	-80.08%
PRZFF	156.95%	TRII	-66.67%

Top 5 Weekly Private Placement News

- LITHIUM AMERICAS Announces Initial Closing of \$650M Investment: [Link](#)
- PIEDMONT LITHIUM and LG CHEM Sign Equity Investment: [Link](#)
- FARADAY COPPER Announces Closing of Bought Deal Financing: [Link](#)
- Arizona Sonoran Closes C\$30M Bought Deal Financing: [Link](#)
- Signal Gold Announces Bridge Financing of Up to \$21M with Nebari: [Link](#)

22 Deals
>\$866.8M

[Find all the Private Placements and News HERE](#)

Top Junior Mining News

- B2Gold Announces Acquisition of Sabina Gold & Silver: [Link](#)
- Merger of Pantoro and Tulla Resources and Pantoro Capital Raising: [Link](#)
- enCore Energy Completes Alta Mesa Acquisition; 3rd Licensed In-Situ Recovery Uranium Plant: [Link](#)
- Teck Announces Completion of NewRange Copper Nickel Joint Venture Agreement with PolyMet: [Link](#)
- San Cristobal Mining Inc. Completes Acquisition of Minera San Cristobal S.A.: [Link](#)

Opinions and Insights

- Gold Weekly Price Forecast: [Link](#)
- Silver Weekly Price Forecast: [Link](#)
- Week Ahead – Economic data dominates: [Link](#)
- Fed’s Preferred Inflation Gauges Seen Running Hot: [Link](#)
- The Polyurethane Economy: Flexible and Adaptable: [Link](#)
- Critical Materials Start 2023 With a Bang: [Link](#)
- Commerzbank lowers mid-year gold price forecast: [Link](#)
- Copper ekes out weekly gain on hopes for Chinese demand: [Link](#)
- Bringing the US Economy Back into Balance: [Link](#)
- Monetary policy after the energy shock: [Link](#)
- Peru protests jolt mine activity with Las Bambas, Antapaccay hit hardest: [Link](#)

My strategy

How I trade



High Impact Calendar (GMT +1:00)

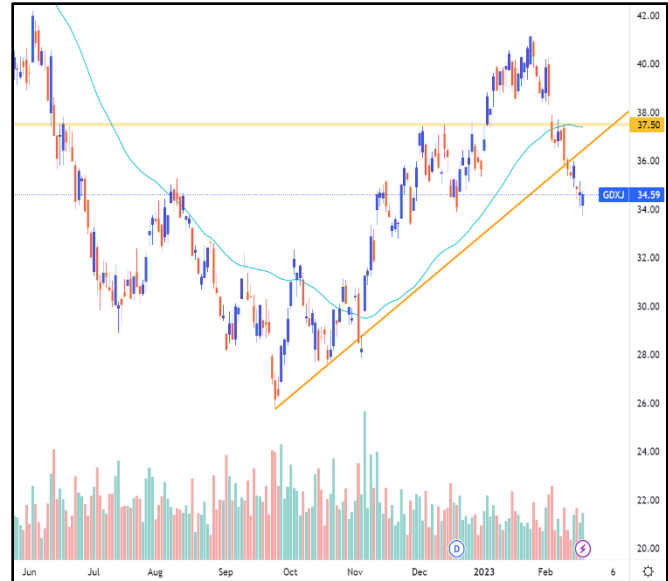
GMT +01:00		High Impact Expected News		
Date	Time	Announcement	Previous	Forecast
21-Feb	2:45 PM	US Flash Services PMI	46.8	47.3
22-Feb	7:00 PM	US FOMC Meeting Minutes	-	-
23-Feb	1:30 PM	US Prelim GDP q/q	2.9%	2.9%
24-Feb	1:30 PM	US Core PCE Price Index m/m	0.3%	0.4%

Erebor Technicals

SPGSCI



GDXJ



Comments:

SPGSCI is following a descending channel since Jun 2022. This week the Index decreased after finding resistance from the 50 DMA, closing at the price of 581.50.

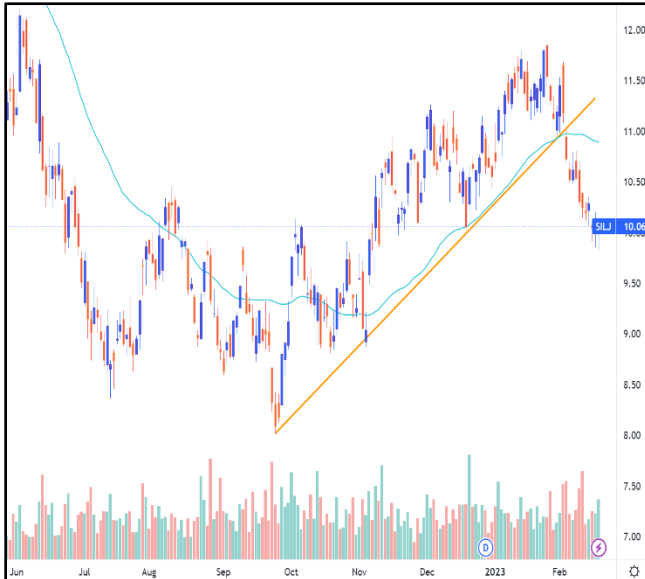
Commodities index is still moving in the channel, following a down trend with the price keep going further down closer to the crucial area of 555.0.

Comments:

GDXJ is moving in a bullish trend since September 2022. However, the ETF closed even lower this week at the price of 34.59.

Gold Junior Miners price further dropped this week, after finding further resistance from the area of 34.50-35.50 and this week's market news.

SILJ:



COPX:



Comments:

SILJ is moving in a bullish trend since October 2022. The ETF closed even lower this week at the price of 10.06.

Silver Junior Miners price further dropped this week, after resistance was still applied from the crucial area of 11.10-11.50 and this week's market news.

Comments:

COPX is moving in a bullish trend since November 2022. The ETF showed some improvement this week with the price closing at 39.19.

Copper Miners price increased this week and it's moving closer to the crucial area of 40.5 – 42.0. Patience will be the key next week at this point.

Disclaimer

The information in this report is provided by www.ereborinsights.com solely for informational purposes and should not be regarded as a recommendation to buy, sell or otherwise deal in any particular investment. The opinions expressed in this report are the opinions of the author and the information provided is drawn from sources believed to be reliable, but the accuracy or completeness of the information is not guaranteed, nor in providing it does Erebor Insights or persons assume any responsibility or liability whatsoever. The commentary is not to be construed as an offer to sell or a solicitation of an offer to buy any securities. Erebor Insights accepts no liability whatsoever for any loss arising from any use or reliance on this commentary or any of the information contained herein.

Also note that as markets change continuously, previously published information and data may not be current and should not be relied upon, and there may be delays, omissions, or inaccuracies in such information. Erebor Insights believes that all information contained in this report was correct at the time of going to press. However, they cannot accept liability for any errors

This information is distributed electronically through email. Should you wish to no longer receive electronic communications from us, please contact info@ereborinsights.com and indicate in the subject line your full name and/or corporate entity name and that you wish to unsubscribe from receiving this electronic communication.