

NEWSLETTER

Lumina Gold
Announces
US\$300 Million
Metals
Streaming
Agreement
with Wheaton
Precious
Metals

EORBF: Top Winner
PRMO: Top Loser



Nickel went down
this week by 2.94%



Silver Junior Miners

Negative



- Silver Indices: **Negative**
- Commodity Sentiment: **Neutral**
- Junior Miners Sentiment: **Neutral**

Weekly Market Overview

Commodity	Weekly Chg.	Weekly Chg. %	Vol.
Gold	👇	-1.61%	1.14%
Silver	👇	-0.38%	1.39%
Copper	👇	-0.21%	1.28%
Platinum	👆	1.66%	1.81%
Aluminium	👆	1.74%	1.20%
Palladium	👆	1.03%	3.38%
Nickel	👇	-2.94%	1.95%
Lead	👆	0.05%	1.27%
Tin	👆	0.74%	1.77%
Zinc	👇	-1.65%	1.74%

Gold Junior Miners

Neutral

- Gold Indices: **Neutral**
- Commodity Sentiment: **Neutral**
- Junior Miners Sentiment: **Neutral**

Silver Junior Miners

Negative

- Silver Indices: **Negative**
- Commodity Sentiment: **Neutral**
- Junior Miners Sentiment: **Neutral**

Copper Junior Miners

Neutral

- Copper Indices: **Neutral**
- Commodity Sentiment: **Neutral**
- Junior Miners Sentiment: **Neutral**

Commodity Sentiment

Neutral

- Commodities Indices: **Neutral**
- Inflation: **Positive**
- Consumer Sentiment: **Positive**

Junior Miners Sentiment

Neutral

- Gold Indices: **Neutral**
- Silver Indices: **Negative**
- Copper Indices: **Neutral**
- Commodity Sentiment: **Neutral**

Our barometer is a way to gauge market movements and whether security instruments are fairly priced. The theory is based on the logic that excessive negativity tends to drive down the prices, and too much positivity tends to have the opposite effect.

Our barometer is a compilation of different indicators that measure some aspect of ETF and commodities behavior. They are comprised of market momentum, price strength, and stock price breadth. It tracks how much these individual indicators deviate from their average. The weightage of each factor is subject to past behavior and market conditions.

Top 5 📈		Top 5 📉	
Ticker	1 W Chg. %	Ticker	1 W Chg. %
EORBF	900.00%	PRMO	-99.00%
GTRIF	674.19%	CMMMFM	-59.90%
BARUF	138.89%	MTLI	-55.71%
MEDAF	86.67%	USCS	-53.21%
AMNL	83.33%	ANTMF	-52.22%

Top 5 Weekly Private Placement News

- Lumina Announces \$300M Metals Streaming Agreement with Weaton: [Link](#)
- Contango ORE Closes Its Secured Credit Facility With ING & Macquarie: [Link](#)
- Skeena Resources Announces C\$64M Bought Deal Financing: [Link](#)
- Moneta Announces Closing of \$26M Bought Deal Private Place: [Link](#)
- Delta Resources Closes C\$10M Bought Deal P.P. of Flow-Through Units: [Link](#)

33 Deals
>\$553.05M

[Find all the Private Placements and News HERE](#)

Top Junior Mining News

- Silvercorp Announces Non-Binding Term Sheet for Proposed Acquisition of Celsius Resources: [Link](#)
- Lithium Americas Approves Agreement for Separation into Two Leading Lithium Companies: [Link](#)
- Hudbay and Copper Mountain Announce Filing of Joint Management Information Circular: [Link](#)
- West Red Lake Gold Mines Signs Definitive Agreement for Madsen Gold Project: [Link](#)

Opinions and Insights

- Gold Weekly Price Forecast: [Link](#)
- Silver Weekly Price Forecast: [Link](#)
- Wall Street Journal sees a debt-ceiling copper glow up: [Link](#)
- Gold Could Push Even Higher in 5 Years: [Link](#)
- LME Profits Fall to 8-Year Low as Nickel Crisis Hits Exchange: [Link](#)
- Has copper bottomed out?: [Link](#)
- Three reasons to buy gold now: [Link](#)
- Who were the 10 biggest gold producing miners in 2022?: [Link](#)
- Visualizing the World's Largest Steel-Producing Countries: [Link](#)
- US Imposes Sanctions on Some of Russia's Biggest Gold Miners: [Link](#)



High Impact Calendar (GMT +1:00)

GMT +00:00		High Impact Expected News		
Date	Time	Announcement	Previous	Forecast
23-May	2:45 PM	US Flash Manufacturing PMI	50.2	50.0
23-May	2:45 PM	US Flash Services PMI	53.6	52.6
24-May	7:00 PM	US FOMC Meeting Minutes	-	-
25-May	1:30 PM	US Prelim GDP q/q	1.1%	1.1%
25-May	1:30 PM	US Unemployment Claims	242K	249K
26-May	1:30 PM	US Core Durable Goods Orders m/m	0.2%	0.0%
26-May	1:30 PM	US Core PCE Price Index m/m	0.3%	0.3%
26-May	1:30 PM	US Durable Goods Orders m/m	3.2%	-1.0%

Erebor Technicals

SPGSCI



Comments:

SPGSCI is following a descending channel since Jun 2022. This week the Index increased and closed at the price of 543.43.

Commodities index is still moving in the channel, following a down trend. The price found resistance at the crucial area of 555.00 and it's moving close to the bottom border of the channel.

GDXJ

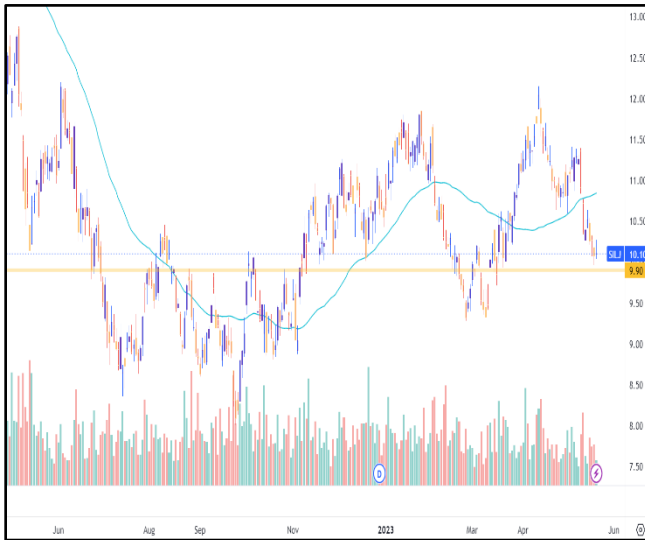


Comments:

GDXJ moving in a bullish trend since September 2022. This week the ETF further decreased and closed at the price of 38.30.

Gold Junior Miners are still moving on an uptrend. The ETF price is finding support at the crucial area around 37.50 and its moving close the 50 DMA and the trend edge. Patience is needed.

SILJ:



COPX:



Comments:

SILJ is moving in a bullish trend since October 2022. This week the ETF further decreased and closed at the price of 10.10. Silver Junior Miners are still trying to move on an uptrend. The ETF affected by the market news, went further down, closer to the crucial level of 10.0, and it seems like the SILJ will get supported there. Patience will be the key for the next few weeks.

Comments:

COPX is moving in a bullish trend since November 2022. This week the ETF further decreased and closed at the price of 37.02. Copper Miners are trying to stay on an uptrend with the price struggling to create new Higher High. The ETF price is moving close to the 50 DMA and it seems like it finds some support at around the area of 37.00, since it was unable to break it last week as well. Patience is needed.

Disclaimer

The information in this report is provided by www.ereborinsights.com solely for informational purposes and should not be regarded as a recommendation to buy, sell or otherwise deal in any particular investment. The opinions expressed in this report are the opinions of the author and the information provided is drawn from sources believed to be reliable, but the accuracy or completeness of the information is not guaranteed, nor in providing it does Erebor Insights or persons assume any responsibility or liability whatsoever. The commentary is not to be construed as an offer to sell or a solicitation of an offer to buy any securities. Erebor Insights accepts no liability whatsoever for any loss arising from any use or reliance on this commentary or any of the information contained herein.

Also note that as markets change continuously, previously published information and data may not be current and should not be relied upon, and there may be delays, omissions, or inaccuracies in such information. Erebor Insights believes that all information contained in this report was correct at the time of going to press. However, they cannot accept liability for any errors

This information is distributed electronically through email. Should you wish to no longer receive electronic communications from us, please contact info@ereborinsights.com and indicate in the subject line your full name and/or corporate entity name and that you wish to unsubscribe from receiving this electronic communication.