

# NEWSLETTER

Discovery  
Silver  
Closing  
\$51.75M  
Marketed  
Public  
Offering

RMESF: Top Winner  
DSCR: Top Loser



Platinum went up  
this week by 7.68%



### Silver Junior Miners

Neutral




- Silver Indices: **Neutral**
- Commodity Sentiment: **Neutral**
- Junior Miners Sentiment: **Positive**

### Weekly Market Overview

Commodity	Weekly Chg.	Weekly Chg. %	Vol.
Gold	👇	-1.02%	0.83%
Silver	👇	-1.10%	0.59%
Copper	👇	-2.38%	0.82%
Platinum	👆	7.68%	1.65%
Aluminium	👆	0.45%	1.78%
Palladium	👆	6.82%	3.12%
Nickel	👆	0.71%	4.07%
Lead	👆	0.86%	0.60%
Tin	👆	8.78%	2.49%
Zinc	👇	-5.58%	1.46%

#### Gold Junior Miners


**Positive**



- Gold Indices: **Positive**
- Commodity Sentiment: **Neutral**
- Junior Miners Sentiment: **Positive**

#### Silver Junior Miners

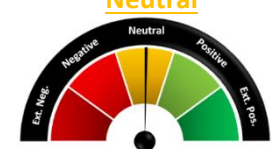
**Neutral**



- Silver Indices: **Neutral**
- Commodity Sentiment: **Neutral**
- Junior Miners Sentiment: **Positive**

#### Copper Junior Miners


**Neutral**



- Copper Indices: **Neutral**
- Commodity Sentiment: **Neutral**
- Junior Miners Sentiment: **Positive**

#### Commodity Sentiment


**Neutral**



- Commodities Indices: **Neutral**
- Inflation: **Positive**
- Consumer Sentiment: **Neutral**

#### Junior Miners Sentiment

**Positive**



- Gold Indices: **Positive**
- Silver Indices: **Positive**
- Copper Indices: **Positive**
- Commodity Sentiment: **Neutral**

Our barometer is a way to gauge market movements and whether security instruments are fairly priced. The theory is based on the logic that excessive negativity tends to drive down the prices, and too much positivity tends to have the opposite effect.

Our barometer is a compilation of different indicators that measure some aspect of ETF and commodities behavior. They are comprised of market momentum, price strength, and stock price breadth. It tracks how much these individual indicators deviate from their average. The weightage of each factor is subject to past behavior and market conditions.

Top 5 📈		Top 5 📉	
Ticker	1 W Chg. %	Ticker	1 W Chg. %
RMESF	309.09%	DSCR	-99.00%
YWRLF	214.69%	GRMC	-98.00%
TAOFF	195.88%	GSDC	-97.50%
MTLI	192.86%	GWRRF	-65.71%
PUCCF	142.17%	FPRGF	-64.00%

### Top 5 Weekly Private Placement News

- Discovery Silver Closing \$51.75M Marketed Public Offering: [Link](#)
- GOWEST GOLD Completes \$25 MILLION Investment: [Link](#)
- U.S. GoldMining Announces Pricing of \$20M Initial Public Offering: [Link](#)
- GoviEx Uranium Announces Upsized Bought Deal P. P. to \$15M: [Link](#)
- Moneta Gold Announces C\$20M Bought Private Placement: [Link](#)

**27 Deals**  
**>\$197.8M**

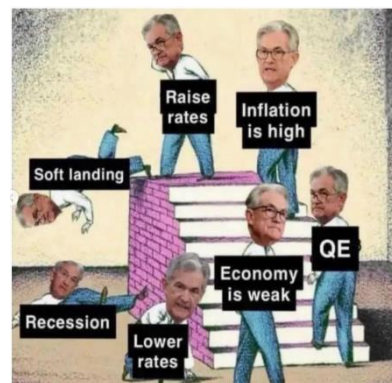
[Find all the Private Placements and News HERE](#)

### Top Junior Mining News

- Pure Gold Mining to be Acquired by West Red Lake Gold Mines: [Link](#)
- B2Gold Completes Acquisition of Sabina Gold & Silver: [Link](#)
- Evolution Energy Minerals: Key agreements signed with the Government of Tanzania: [Link](#)
- West Red Lake Gold Mines Ltd. to Acquire Madsen Gold Mine in Transformative Transaction: [Link](#)
- Silver X Mining to Acquire Revenue-Virginus Mine Assets in Ouray, Colorado Out of Receivership: [Link](#)

### Opinions and Insights

- Gold Weekly Price Forecast: [Link](#)
- Silver Weekly Price Forecast: [Link](#)
- Commodity Weekly: Energy % Metals soften: [Link](#)
- Step Aside, Gold. This Precious Metal Is About to Skyrocket: [Link](#)
- Copper miner Freeport-McMoRan beats profit estimates: [Link](#)
- Silver: Continues to See Buyers on Dips: [Link](#)
- The Metal Showing Signs of Rust: [Link](#)
- US Dollar rises timidly on cautious markets: [Link](#)
- US Business Activity Unexpectedly Jumps, Risking More Inflation: [Link](#)



### High Impact Calendar (GMT +1:00)

GMT +00:00		High Impact Expected News		
Date	Time	Announcement	Previous	Forecast
25-Apr	3:00 PM	US CB Consumer Confidence	104.2	104.1
26-Apr	1:30 PM	US Durable Goods Orders m/m	-1.0%	0.8%
27-Apr	1:30 PM	US Advance GDP q/q	2.6%	2.0%
27-Apr	1:30 PM	US Unemployment Claims	245K	249K
28-Apr	Tentative	JN BOJ Outlook Report	-	-
28-Apr	Tentative	JN Monetary Policy Statement	-	-
28-Apr	1:30 PM	US Core PCE Price Index m/m	0.3%	0.3%
28-Apr	1:30 PM	US Employment Cost Index q/q	1.0%	1.1%
28-Apr	Tentative	US Treasury Currency Report	-	-

### Erebor Technicals

#### SPGSCI

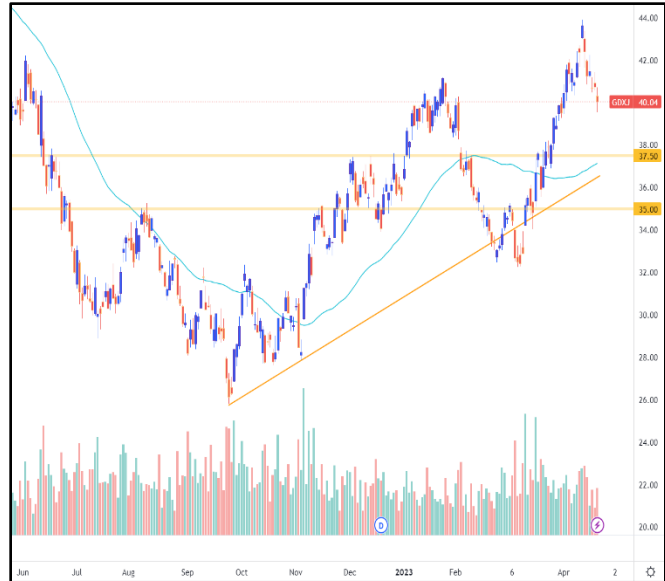


#### Comments:

SPGSCI is following a descending channel since Jun 2022. This week the Index decreased and closed at the price of 573.89.

Commodities index is still moving in the channel, following a down trend. The price found some resistance this week at the crucial are of 600.00 and at the upper edge of the trendline and went all the way down and intersected with the 50DMA.

#### GDXJ



#### Comments:

GDXJ moving in a bullish trend since September 2022. This week the ETF slightly decreased and closed at the price of 40.40.

Gold Junior Miners created a new Higher High and surpassed its previous one at the price level of 41.00. The ETF was in a retest phase this week with the price finding support at its previous High level.



### SILJ:



### COPX:



#### Comments:

SILJ is moving in a bullish trend since October 2022. This week the ETF slightly decreased and closed at the price of 10.99. Silver Junior Miners barely created a new Higher High and surpassed its previous one at the price level of 11.80. The ETF was in a retest phase this week with the price finding support at its previous High level and moving closer to the 50DMA.

#### Comments:

COPX is moving in a bullish trend since November 2022. This week the ETF slightly decreased and closed at the price of 40.18. Copper Miners price run all the way, at the same level of its previous High this week and it looks like the ETF is trying to create a new Higher High. The ETF was in a retest phase this week with the price finding support from previous High levels and moving closer to the 50DMA.

### Disclaimer

The information in this report is provided by [www.ereborinsights.com](http://www.ereborinsights.com) solely for informational purposes and should not be regarded as a recommendation to buy, sell or otherwise deal in any particular investment. The opinions expressed in this report are the opinions of the author and the information provided is drawn from sources believed to be reliable, but the accuracy or completeness of the information is not guaranteed, nor in providing it does Erebor Insights or persons assume any responsibility or liability whatsoever. The commentary is not to be construed as an offer to sell or a solicitation of an offer to buy any securities. Erebor Insights accepts no liability whatsoever for any loss arising from any use or reliance on this commentary or any of the information contained herein.

Also note that as markets change continuously, previously published information and data may not be current and should not be relied upon, and there may be delays, omissions, or inaccuracies in such information. Erebor Insights believes that all information contained in this report was correct at the time of going to press. However, they cannot accept liability for any errors

This information is distributed electronically through email. Should you wish to no longer receive electronic communications from us, please contact [info@ereborinsights.com](mailto:info@ereborinsights.com) and indicate in the subject line your full name and/or corporate entity name and that you wish to unsubscribe from receiving this electronic communication.