

NEWSLETTER

Talisker
Announces
Closing Of The
Initial Draw On
The \$31.25M
Financing With
Sprott Streaming
For The Bralorne
Gold Project

CPKOF: Top Winner
BGUUF: Top Loser



Silver went down
this week by 7.24%



Gold Junior Miners

Negative



- Gold Indices: **Negative**
- Commodity Sentiment: **Neutral**
- Junior Miners Sentiment: **Negative**

Weekly Market Overview

Commodity	Weekly Chg.	Weekly Chg. %	Vol.
Gold	↘	-1.88%	0.61%
Silver	↘	-7.24%	1.67%
Copper	↗	2.26%	0.37%
Platinum	↘	-6.54%	0.75%
Aluminium	↘	-4.39%	0.78%
Palladium	↘	-9.07%	2.37%
Nickel	↘	-9.74%	0.95%
Lead	↗	0.77%	1.80%
Tin	↘	-0.38%	1.45%
Zinc	↘	-4.92%	3.43%

Gold Junior Miners

Negative

- Gold Indices: **Negative**
- Commodity Sentiment: **Neutral**
- Junior Miners Sentiment: **Negative**

Silver Junior Miners

Negative

- Silver Indices: **Negative**
- Commodity Sentiment: **Neutral**
- Junior Miners Sentiment: **Negative**

Copper Junior Miners

Neutral

- Copper Indices: **Neutral**
- Commodity Sentiment: **Neutral**
- Junior Miners Sentiment: **Negative**

Commodity Sentiment

Neutral

- Commodities Indices: **Neutral**
- Inflation: **Neutral**
- Consumer Sentiment: **Positive**

Junior Miners Sentiment

Negative

- Gold Indices: **Negative**
- Silver Indices: **Negative**
- Copper Indices: **Neutral**
- Commodity Sentiment: **Neutral**

Our barometer is a way to gauge market movements and whether security instruments are fairly priced. The theory is based on the logic that excessive negativity tends to drive down the prices, and too much positivity tends to have the opposite effect.

Our barometer is a compilation of different indicators that measure some aspect of ETF and commodities behavior. They are comprised of market momentum, price strength, and stock price breadth. It tracks how much these individual indicators deviate from their average. The weightage of each factor is subject to past behavior and market conditions.

Top 5 ↗		Top 5 ↘	
Ticker	1 W Chg. %	Ticker	1 W Chg. %
CPKOF	320.00%	BGUUF	-99.60%
YWRLF	312.73%	TREVQ	-99.00%
GDBYF	310.00%	LRTNF	-90.00%
LANRF	257.71%	LNCLF	-89.78%
CATTF	107.21%	PGVI	-77.00%

Top 5 Weekly Private Placement News

- Talisker Announces Closing Of The Initial Draw On The \$31.25M Financing: [Link](#)
- Coeur Announces C\$25M Private Placement: [Link](#)
- Marimaca Announces C\$20M Strategic Investment from Mitsubishi: [Link](#)
- O3 Mining Announces C\$10M Convertible Debenture Placement: [Link](#)
- Stillwater Announces 9.99% Strategic Investment by Glencore: [Link](#)

19 Deals
>\$107.6M

[Find all the Private Placements and News HERE](#)

Top Junior Mining News

- Trillium Gold Mines Completes Plan of Arrangement to Acquire Pacton Gold: [Link](#)
- Lithium One and Norris Lithium to Merge to Expand Land Position in James Bay, Québec: [Link](#)
- Hudbay to Acquire Rockcliff to Consolidate the Snow Lake Camp: [Link](#)
- Blackwolf Copper and Gold Enters LOI to Acquire Optimum Ventures Ltd: [Link](#)
- Hudbay Completes Acquisition of Copper Mountain to Create a Premier Americas Copper Producer: [Link](#)

Opinions and Insights

- Gold Weekly Price Forecast: [Link](#)
- Silver Weekly Price Forecast: [Link](#)
- The Global Week Ahead: Is A US Housing Recovery Sustainable?: [Link](#)
- High I.R. & Economic Uncertainty, Behind Rise in Corporate Defaults: [Link](#)
- Powell Wins Over Bond Traders Dialing Back Bets on Deep Downturn: [Link](#)
- After Disappointing PMIs, Attention will Turn Back to Inflation: [Link](#)
- Fed's Bostic Says Tackling High Inflation Is Top Priority: [Link](#)
- Fed confirms more hikes are coming: [Link](#)
- Palladium in retreat on EV prospects, growth risks: [Link](#)
- Zinc demand, price outlooks deteriorating – BMI: [Link](#)
- US Business Activity Growth Cools as Manufacturing Weakens: [Link](#)



High Impact Calendar (GMT +1:00)

GMT +00:00		High Impact Expected News		
Date	Time	Announcement	Previous	Forecast
27-Jun	1:30 PM	US Core Durable Goods Orders m/m	-0.3%	-0.2%
27-Jun	1:30 PM	US Durable Goods Orders m/m	1.1%	-0.8%
27-Jun	3:00 PM	US CB Consumer Confidence	102.3	104
28-Jun	2:30 PM	US Fed Chair Powell Speaks	-	-
29-Jun	1:30 PM	US Final GDP q/q	1.3%	1.4%
29-Jun	1:30 PM	US Unemployment Claims	264K	264K
30-Jun	1:30 PM	US Core PCE Price Index m/m	0.4%	0.4%

Erebor Technicals

SPGSCI

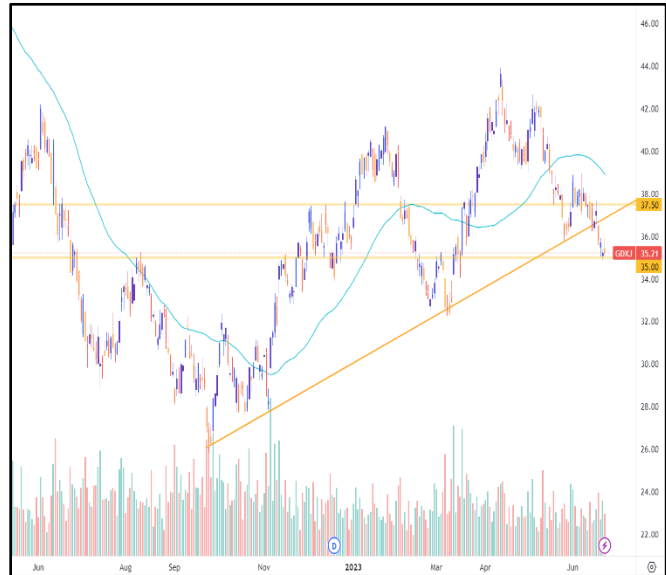


Comments:

SPGSCI is following a descending channel since Jun 2022. This week the Index decreased and closed at the price of 541.57.

Commodities index is still moving in the channel, following a down trend. The price keeps finding resistance at the crucial area of 555.00 and this week intersected and found resistance from the 50DMA as well.

GDXJ

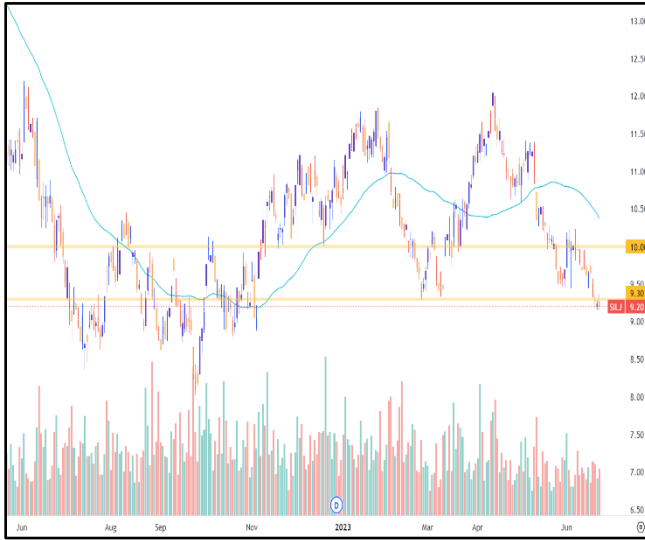


Comments:

GDXJ moving in a bullish trend since September 2022. This week the ETF further decreased and closed at the price of 35.21.

Gold Junior Miners are trying to stay on an uptrend. This week the ETF price moved closer to the crucial area around 35.00, where it seems it found support too. Patience is needed to see how the price will move in the next few weeks.

SILJ:



COPX:



Comments:

SILJ is trying to form a trend. This week the ETF further decreased and closed at the price of 9.20.

Silver Junior Miners price has gone further down, close to the crucial area around 9.30. ETF has created a lower low this week. Patience is needed to see how the price will move in the next few weeks, according to the recent news.

Comments:

COPX is moving in a bullish trend since November 2022. This week the ETF decreased and closed at the price of 37.39. Copper Miners are trying to stay on an uptrend. The ETF price came back to the crucial area of 38.00 where it broke through and found some resistance close to this area at the end of the week. Patience is needed to see how the price will move in the next few weeks.

Disclaimer

The information in this report is provided by www.ereborinsights.com solely for informational purposes and should not be regarded as a recommendation to buy, sell or otherwise deal in any particular investment. The opinions expressed in this report are the opinions of the author and the information provided is drawn from sources believed to be reliable, but the accuracy or completeness of the information is not guaranteed, nor in providing it does Erebor Insights or persons assume any responsibility or liability whatsoever. The commentary is not to be construed as an offer to sell or a solicitation of an offer to buy any securities. Erebor Insights accepts no liability whatsoever for any loss arising from any use or reliance on this commentary or any of the information contained herein.

Also note that as markets change continuously, previously published information and data may not be current and should not be relied upon, and there may be delays, omissions, or inaccuracies in such information. Erebor Insights believes that all information contained in this report was correct at the time of going to press. However, they cannot accept liability for any errors

This information is distributed electronically through email. Should you wish to no longer receive electronic communications from us, please contact info@ereborinsights.com and indicate in the subject line your full name and/or corporate entity name and that you wish to unsubscribe from receiving this electronic communication.