

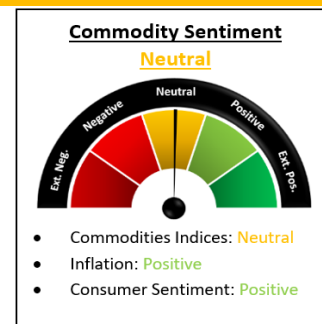
# NEWSLETTER

Bunker Hill Mining  
Announces  
Upsized and  
Improved \$67M  
Financing Package  
to Enable  
Completion of the  
Mine Restart,  
Offtake  
Agreement

TGMGF: Top Winner  
BKSLF: Top Loser



Zink went down  
this week by 6.89%



### Weekly Market Overview

Commodity	Weekly Chg.	Weekly Chg. %	Vol.
Gold	↘	-1.63%	0.68%
Silver	↘	-2.26%	1.78%
Copper	↘	-1.71%	1.57%
Platinum	↘	-3.75%	1.25%
Aluminium	↘	-2.03%	1.21%
Palladium	↘	-6.09%	2.31%
Nickel	↘	-1.97%	1.47%
Lead	↘	-1.76%	1.16%
Tin	↘	-0.89%	2.17%
Zinc	↘	-6.89%	3.68%

#### Gold Junior Miners

**Negative**

- Gold Indices: **Negative**
- Commodity Sentiment: **Neutral**
- Junior Miners Sentiment: **Negative**

#### Silver Junior Miners

**Negative**

- Silver Indices: **Negative**
- Commodity Sentiment: **Neutral**
- Junior Miners Sentiment: **Negative**

#### Copper Junior Miners

**Negative**

- Copper Indices: **Negative**
- Commodity Sentiment: **Neutral**
- Junior Miners Sentiment: **Negative**

#### Commodity Sentiment

**Neutral**

- Commodities Indices: **Neutral**
- Inflation: **Positive**
- Consumer Sentiment: **Positive**

#### Junior Miners Sentiment

**Negative**

- Gold Indices: **Negative**
- Silver Indices: **Negative**
- Copper Indices: **Negative**
- Commodity Sentiment: **Neutral**

Our barometer is a way to gauge market movements and whether security instruments are fairly priced. The theory is based on the logic that excessive negativity tends to drive down the prices, and too much positivity tends to have the opposite effect.

Our barometer is a compilation of different indicators that measure some aspect of ETF and commodities behavior. They are comprised of market momentum, price strength, and stock price breadth. It tracks how much these individual indicators deviate from their average. The weightage of each factor is subject to past behavior and market conditions.

Top 5 ↗		Top 5 ↘	
Ticker	1 W Chg. %	Ticker	1 W Chg. %
TGMGF	791.25%	BKSLF	-99.00%
KWGBF	105.88%	GWMGF	-99.00%
MOCI	100.00%	ISMRF	98.82%
TARSF	100.00%	ZZZOF	85.23%
AUXIF	63.09%	MMMRF	63.16%

### Top 5 Weekly Private Placement News

- Bunker Hill Announces Upsized and Improved \$67M Financing Package: [Link](#)
- Skeena Resources Closes C\$73.5M Bought Deal Financing: [Link](#)
- Nevada King Announces Closing of Common Share Offering of \$16.25M: [Link](#)
- Argonaut Gold Announces Closing of C\$17.5M of "Bought-Deal" P.P.: [Link](#)
- Defense Metals Corp. Announces Closing of its \$12.5M P.P.: [Link](#)

**21 Deals**  
**>\$225.2M**

[Find all the Private Placements and News HERE](#)

### Top Junior Mining News

- Scorpio Gold Announces Letter of Intent to Acquire Altus Gold: [Link](#)
- Tarachi Gold Closes Sale Of Magistral Project: [Link](#)
- Silver Dollar Completes Acquisition of La Joya Ag-Cu-Au Property from First Majestic Silver: [Link](#)

### Opinions and Insights

- Gold Weekly Price Forecast: [Link](#)
- Silver Weekly Price Forecast: [Link](#)
- Week Ahead: [Link](#)
- Bearish Base Metals Bottoming Out?: [Link](#)
- Hedge Funds Bet Against Copper for First Time in Three Years: [Link](#)
- Oil volatile after a week of mixed messages: [Link](#)
- No Signs of a Bottom "Yet": [Link](#)
- US Dollar Will Keep Its Global Dominance Despite Challenges: [Link](#)
- Advance Economic Indicators Report - April 2023: [Link](#)
- The economics of the debt ceiling debate: [Link](#)
- US Jobs Report Is Set to Provide Some Solace to the Fed: [Link](#)

**Me after sitting 16 hours  
in front of the charts**



### High Impact Calendar (GMT +1:00)

GMT +00:00		High Impact Expected News		
Date	Time	Announcement	Previous	Forecast
30-May	3:00 PM	US CB Consumer Confidence	101.3	99.1
31-May	3:00 PM	US JOLTS Job Openings	9.59M	9.41M
01-Jun	1:15 PM	US ADP Non-Farm Employment Change	-	-
01-Jun	1:30 PM	US Unemployment Claims	0.011	0.011
01-Jun	3:00 PM	US ISM Manufacturing PMI	242K	249K
02-Jun	1:30 PM	US Average Hourly Earnings m/m	0.2%	0.0%
02-Jun	1:30 PM	US Non-Farm Employment Change	0.003	0.003
02-Jun	1:30 PM	US Unemployment Rate	3.2%	-1.0%

### Erebor Technicals

#### SPGSCI

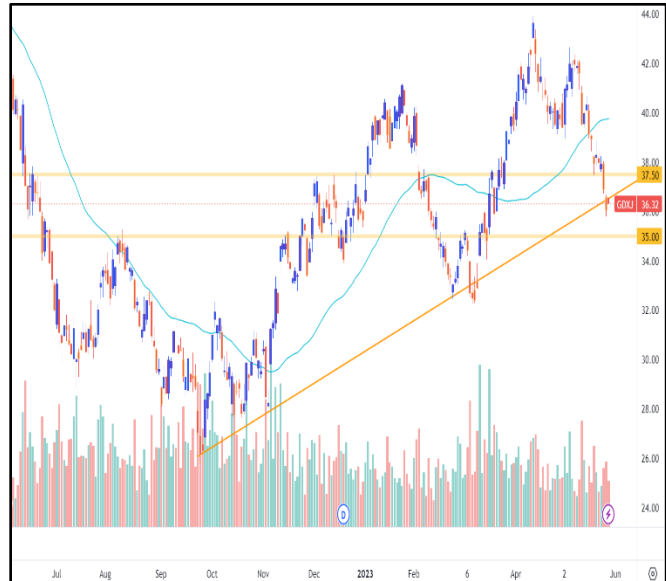


#### **Comments:**

SPGSCI is following a descending channel since Jun 2022. This week the Index slightly increased and closed at the price of 546.85.

Commodities index is still moving in the channel, following a down trend. The price keeps finding resistance at the crucial area of 555.00 and it's moving close to the bottom border of the channel.

#### GDXJ



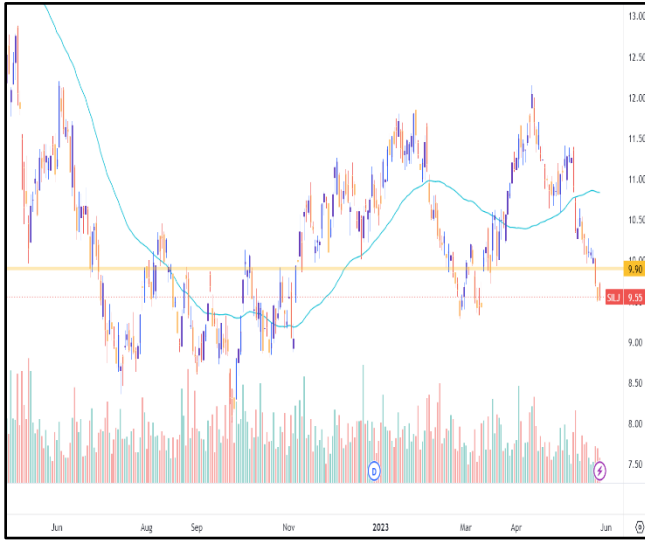
#### **Comments:**

GDXJ moving in a bullish trend since September 2022. This week the ETF further decreased and closed at the price of 36.32.

Gold Junior Miners are trying to stay on an uptrend. The ETF price is still moving close to the crucial area around 37.50 and the trend edge and it's trying to find some resistance. Patience is needed.



### SILJ:



### COPX:



#### Comments:

SILJ is trying to form a trend. This week the ETF further decreased and closed at the price of 9.55.

Silver Junior Miners seems that they're struggling to stay in an uptrend. The ETF price seems that is looking for support and it's moving at the same level as its previous low. Patience will be the key for the next few weeks.

#### Comments:

COPX is moving in a bullish trend since November 2022. This week the ETF further decreased and closed at the price of 35.62. Copper Miners are trying to stay on an uptrend with the price struggling to create new Higher High. The ETF price is moving close to the crucial area of 35.50 and its previous low and looks like it's looking for a support there. Patience is needed.

### Disclaimer

The information in this report is provided by [www.ereborinsights.com](http://www.ereborinsights.com) solely for informational purposes and should not be regarded as a recommendation to buy, sell or otherwise deal in any particular investment. The opinions expressed in this report are the opinions of the author and the information provided is drawn from sources believed to be reliable, but the accuracy or completeness of the information is not guaranteed, nor in providing it does Erebor Insights or persons assume any responsibility or liability whatsoever. The commentary is not to be construed as an offer to sell or a solicitation of an offer to buy any securities. Erebor Insights accepts no liability whatsoever for any loss arising from any use or reliance on this commentary or any of the information contained herein.

Also note that as markets change continuously, previously published information and data may not be current and should not be relied upon, and there may be delays, omissions, or inaccuracies in such information. Erebor Insights believes that all information contained in this report was correct at the time of going to press. However, they cannot accept liability for any errors

This information is distributed electronically through email. Should you wish to no longer receive electronic communications from us, please contact [info@ereborinsights.com](mailto:info@ereborinsights.com) and indicate in the subject line your full name and/or corporate entity name and that you wish to unsubscribe from receiving this electronic communication.