

NEWSLETTER

TVI Pacific's
Closes US
\$30 million
Term Loan
Facility
Through
GRC

HYMC: Top Winner
ABAT: Top Loser



Palladium went down
this week by -9.38%



Weekly Market Overview

Commodity	Weekly Chg.	Weekly Chg. %	Vol.
Gold	↗	0.58%	0.68%
Silver	↘	-1.36%	0.66%
Copper	↘	-0.09%	0.43%
Platinum	↗	1.69%	1.38%
Aluminium	↗	2.87%	0.52%
Palladium	↘	-9.38%	0.75%
Nickel	↘	-0.50%	1.59%
Lead	↘	-0.42%	0.68%
Tin	↗	0.50%	3.20%
Zinc	↗	2.51%	0.49%

Gold Junior Miners
Positive

- Gold Indices: **Positive**
- Commodity Sentiment: **Neutral**
- Junior Miners Sentiment: **Positive**

Silver Junior Miners
Positive

- Silver Indices: **Positive**
- Commodity Sentiment: **Neutral**
- Junior Miners Sentiment: **Positive**

Copper Junior Miners
Positive

- Copper Indices: **Positive**
- Commodity Sentiment: **Neutral**
- Junior Miners Sentiment: **Positive**

Commodity Sentiment
Neutral

- Commodities Indices: **Neutral**
- Inflation: **Neutral**
- Consumer Sentiment: **Ext. Positive**

Junior Miners Sentiment
Positive

- Gold Indices: **Positive**
- Silver Indices: **Positive**
- Copper Indices: **Positive**
- Commodity Sentiment **Positive**

Our barometer is a way to gauge market movements and whether security instruments are fairly priced. The theory is based on the logic that excessive negativity tends to drive down the prices, and too much positivity tends to have the opposite effect. Our barometer is a compilation of different indicators that measure some aspect of ETF and commodities behavior. They are comprised of market momentum, price strength, and stock price breadth. It tracks how much these individual indicators deviate from their average. The weightage of each factor is subject to past behavior and market conditions.

Top 5 ↗		Top 5 ↘	
Ticker	1 W Chg. %	Ticker	1 W Chg. %
HYMC	16.11%	ABAT	-15.65%
MTAL	12.98%	DC	-11.49%
AUST	8.03%	RETO	-8.95%
ATLX	7.79%	UUUU	-6.38%
USAU	7.46%	CMCL	-6.37%

Top 5 Weekly Private Placement News

- TVI Pacific's 30.66% owned TVIRD Closes US \$30 million Term Loan Facility Through GRC for its Siana Gold Mine : [Link](#)
- ATHA Energy Announces Closing of Financing for Aggregate Gross Proceeds of \$23,494,532.20: [Link](#)
- AGNICO EAGLE INVESTMENT IN CANADA NICKEL COMPANY INC.: [Link](#)
- Horizonte Minerals PLC Announces INTERIM US\$20M FUNDING PACKAGE SIGNED: [Link](#)
- Paramount Gold Nevada Closes \$15 Million Financing With Sprott Streaming: [Link](#)

43 Deals
>\$167M

[Find all the Private Placements and News HERE](#)

Top Junior Mining News

- Silvercorp Announces Takeover Offer for OreCorp: [Link](#)
- Energy Fuels Enters into MOU to Secure Near-Term, Large-Scale Australian Source of Rare Earth Minerals to Supply New U.S.-Based Supply Chain for Decades: [Link](#)
- Surge Copper Acquires 100% Interest in Berg: [Link](#)
- Chile's state-run Codelco to control new lithium partnership with SQM : [Link](#)
- Silvercorp Announces Takeover Offer for OreCorp: [Link](#)

Opinions and Insights

- Gold Weekly Price Forecast: [Link](#)
- Silver Weekly Price Forecast: [Link](#)
- Weather, rates and unrest paint muddy picture for commodities in 2023: [Link](#)

High Impact Calendar (GMT +1:00)

GMT +00:00		High Impact Expected News		
Date	Time	Announcement	Previous	Forecast
3/1/2024	5:00pm	US ISM Manufacturing PMI	46.7	47.2
3/1/2024	5:00pm	US JOLTS Job Openings	8.73M	8.85M
3/1/2024	9:00pm	US FOMC Meeting Minutes		
4/1/2024	3:15pm	US ADP Non-Farm Employment Change	103K	
4/1/2024	3:30pm	US Unemployment Claims	218K	210K
5/1/2024	3:30pm	US Average Hourly Earnings m/m	0.40%	0.30%
5/1/2024	3:30pm	US Non-Farm Employment Change	199K	168K
5/1/2024	3:30pm	US Unemployment Rate	3.70%	3.80%
5/1/2024	5:00pm	US ISM Services PMI	52.7	52.5

Erebor Technicals

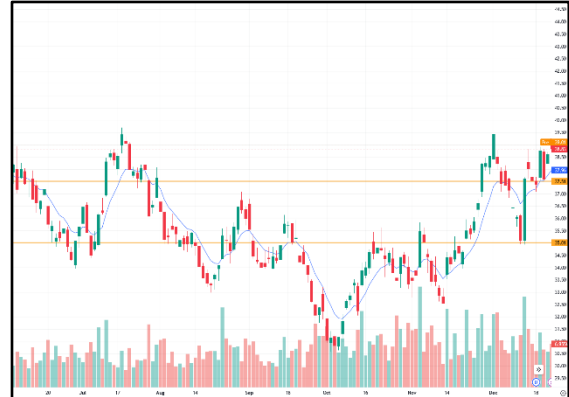
SPGSCI



Comments:

The S&P GSCI closed the week at 569.55, up 1.49% from the previous week. The index traded within a relatively narrow range throughout the week, but closed above its 20-day and 50-day moving averages, which is a bullish signal. The RSI (Relative Strength Index) for the S&P GSCI is currently at 56.40, which is considered to be in neutral territory. Overall, the technical analysis of the S&P GSCI for the week of December 25-31, 2023, is slightly bullish, and the index is currently consolidating near its 50-day moving average..

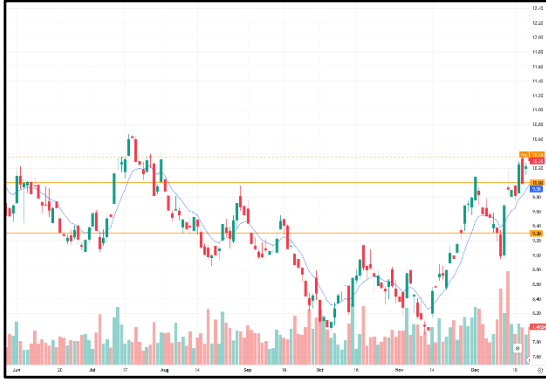
GDXJ



Comments:

GDXJ closed the week at 38.65, up 3.13% from the previous week. The index traded within a relatively narrow range throughout the week, but closed above its 20-day and 50-day moving averages, which is a bullish signal. The RSI (Relative Strength Index) for GDXJ is currently at 60.00, which is considered to be in overbought territory. Overall, the technical analysis of GDXJ for the week of December 25-31, 2023, is bullish.

SILJ:



COPX:



Comments:

SILJ closed the week at 23.53, up 2.25% from the previous week. The index traded within a relatively narrow range throughout the week, but closed above its 20-day and 50-day moving averages, which is a bullish signal. The RSI (Relative Strength Index) for SILJ is currently at 61.80, which is considered to be in overbought territory. Overall, the technical analysis of SILJ for the week of December 25-31, 2023, is bullish.

Comments:

COPX closed the week at 36.53, up 3.88% from the previous week. The index traded within a relatively narrow range throughout the week, but closed above its 20-day and 50-day moving averages, which is a bullish signal. The RSI (Relative Strength Index) for COPX is currently at 63.20, which is considered to be in overbought territory. Overall, the technical analysis of COPX for the week of December 25-31, 2023, is bullish.

Disclaimer

The information in this report is provided by www.ereborinsights.com solely for informational purposes and should not be regarded as a recommendation to buy, sell or otherwise deal in any particular investment. The opinions expressed in this report are the opinions of the author and the information provided is drawn from sources believed to be reliable, but the accuracy or completeness of the information is not guaranteed, nor in providing it does Erebor Insights or persons assume any responsibility or liability whatsoever. The commentary is not to be construed as an offer to sell or a solicitation of an offer to buy any securities. Erebor Insights accepts no liability whatsoever for any loss arising from any use or reliance on this commentary or any of the information contained herein.

Also note that as markets change continuously, previously published information and data may not be current and should not be relied upon, and there may be delays, omissions, or inaccuracies in such information. Erebor Insights believes that all information contained in this report was correct at the time of going to press. However, they cannot accept liability for any errors

This information is distributed electronically through email. Should you wish to no longer receive electronic communications from us, please contact info@ereborinsights.com and indicate in the subject line your full name and/or corporate entity name and that you wish to unsubscribe from receiving this electronic communication.