

# NEWSLETTER

Foran Mining  
Announces  
C\$200  
Million  
Brokered  
Private  
Placement

VGZ: Top Winner  
TMC: Top Loser



Silver went up this  
week by 4.56%



### Weekly Market Overview

Commodity	Weekly Chg.	Weekly Chg. %	Vol.
Gold	↗	3.52%	0.99%
Silver	↗	4.56%	0.60%
Copper	↗	1.51%	1.02%
Platinum	↗	0.37%	1.82%
Aluminium	↘	-0.80%	0.58%
Palladium	↘	-6.73%	1.15%
Nickel	↗	4.53%	2.34%
Lead	↘	-4.15%	0.41%
Tin	↘	-3.33%	1.64%
Zinc	↘	-3.10%	0.28%

**Gold Junior Miners**  
**Positive**

- Gold Indices: **Positive**
- Commodity Sentiment: **Neutral**
- Junior Miners Sentiment: **Neutral**

**Silver Junior Miners**  
**Positive**

- Silver Indices: **Positive**
- Commodity Sentiment: **Neutral**
- Junior Miners Sentiment: **Neutral**

**Copper Junior Miners**  
**Neutral**

- Copper Indices: **Neutral**
- Commodity Sentiment: **Neutral**
- Junior Miners Sentiment: **Neutral**

**Commodity Sentiment**  
**Neutral**

- Commodities Indices: **Neutral**
- Inflation: **Neutral**
- Consumer Sentiment: **Positive**

**Junior Miners Sentiment**  
**Positive**

- Gold Indices: **Positive**
- Silver Indices: **Positive**
- Copper Indices: **Neutral**
- Commodity Sentiment: **Positive**

Our barometer is a way to gauge market movements and whether security instruments are fairly priced. The theory is based on the logic that excessive negativity tends to drive down the prices, and too much positivity tends to have the opposite effect.

Our barometer is a compilation of different indicators that measure some aspect of ETF and commodities behavior. They are comprised of market momentum, price strength, and stock price breadth. It tracks how much these individual indicators deviate from their average. The weightage of each factor is subject to past behavior and market conditions.

<b>Top 5 ↗</b>		<b>Top 5 ↘</b>	
Ticker	1 W Chg. %	Ticker	1 W Chg. %
VGZ	34.88%	TMC	-15.71%
GSM	22.89%	ATLX	-13.31%
PZG	19.41%	CTGO	-11.23%
AU	16.37%	UUUU	-8.76%
GORO	14.99%	WWR	-7.34%

### Top 5 Weekly Private Placement News

- Foran Announces Size of Previously Announced Brokered Private Placement of C\$200 Million: [Link](#)
- Orion Resource Partners to Support Development of Chvaletice Project with US\$100M Funding: [Link](#)
- EMN Announces Closing of Initial US\$20 Million under Orion Resource Partners Funding Package: [Link](#)
- Lumina Gold Announces US\$17M Wheaton Precious Metals Draw: [Link](#)
- Giyani secures US\$16 million of development financing from the IDC: [Link](#)

**34 Deals**  
**>\$412M**

[Find all the Private Placements and News HERE](#)

### Top Junior Mining News

- IsoEnergy Announces Approval of Arrangement by Consolidated Uranium Shareholders and Receipt of Final Order: [Link](#)
- Nighthawk Gold and Moneta Gold Announce At-Market Merger to Create Leading Canadian Gold Development Company: [Link](#)
- Metalla Royalty & Streaming and Nova Royalty Announce Completion of Arrangement: [Link](#)
- Hydro completes sale to Glencore: [Link](#)
- Orea Terminates Acquisition of Additional Interest in Montagne d'Or Project: [Link](#)

### Opinions and Insights

- Gold Weekly Price Forecast: [Link](#)
- Silver Weekly Price Forecast: [Link](#)
- Commodity Weekly: [Link](#)

### High Impact Calendar (GMT +1:00)

GMT +00:00		High Impact Expected News		
Date	Time	Announcement	Previous	Forecast
12/5/2023	5:00pm	US ISM Services PMI	51.8	52.5
12/5/2023	5:00pm	US JOLTS Job Openings	9.55M	9.33M
12/6/2023	3:15pm	US ADP Non-Farm Employment Change	113K	120K
12/6/2023	5:00pm	CA BOC Rate Statement		
12/6/2023	5:00pm	CA Overnight Rate	5.00%	5.00%
12/7/2023	3:30pm	US Unemployment Claims	218K	221K
12/8/2023	8th-15th	CH New Loans	738B	1320B
12/8/2023	3:30pm	US Average Hourly Earnings m/m	0.20%	0.30%
12/8/2023	3:30pm	US Non-Farm Employment Change	150K	185K
12/8/2023	3:30pm	US Unemployment Rate	3.90%	3.90%
12/8/2023	5:00pm	US Prelim UoM Consumer Sentiment	61.3	62

### Erebor Technicals

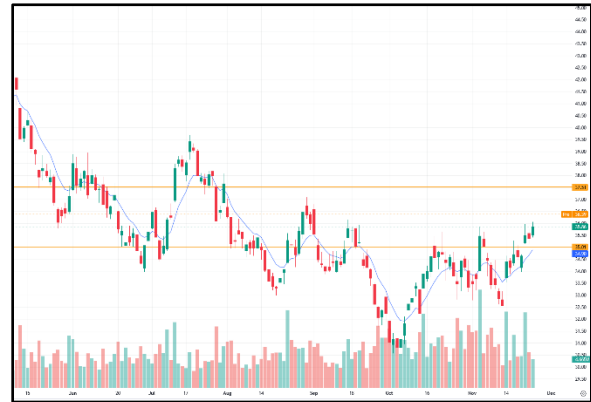
#### SPGSCI



#### Comments:

The S&P GSCI closed the week at 558.21, down 4.08% from the previous week. The index traded within a relatively wide range throughout the week, but closed below its 20-day and 50-day moving averages, which is a bearish signal. The RSI (Relative Strength Index) for the S&P GSCI is currently at 48.40, which is considered to be oversold territory.

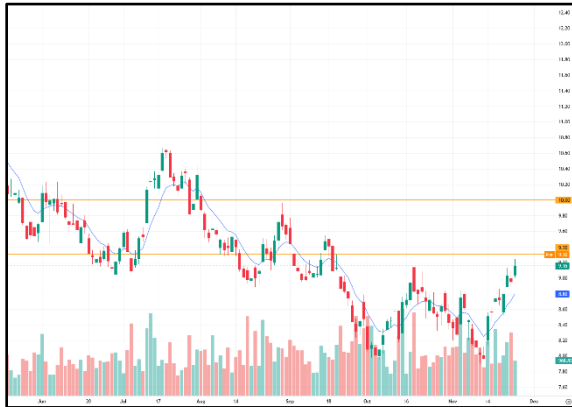
#### GDXJ



#### Comments:

GDXJ closed the week at 36.23, down 2.92% from the previous week. The index traded within a relatively narrow range throughout the week, but closed below its 20-day and 50-day moving averages, which is a bearish signal. The RSI (Relative Strength Index) for GDXJ is currently at 45.20, which is considered to be oversold territory.

### SILJ:



#### **Comments:**

SILJ closed the week at 21.85, down 2.20% from the previous week. The index traded within a relatively narrow range throughout the week, but closed below its 20-day and 50-day moving averages, which is a bearish signal. The RSI (Relative Strength Index) for SILJ is currently at 49.20, which is considered to be neutral territory.

### COPX:



#### **Comments:**

COPX closed the week at 33.45, down 4.04% from the previous week. The index traded within a relatively narrow range throughout the week, but closed below its 20-day and 50-day moving averages, which is a bearish signal. The RSI (Relative Strength Index) for COPX is currently at 47.20, which is considered to be oversold territory.

### Disclaimer

The information in this report is provided by [www.ereborinsights.com](http://www.ereborinsights.com) solely for informational purposes and should not be regarded as a recommendation to buy, sell or otherwise deal in any particular investment. The opinions expressed in this report are the opinions of the author and the information provided is drawn from sources believed to be reliable, but the accuracy or completeness of the information is not guaranteed, nor in providing it does Erebor Insights or persons assume any responsibility or liability whatsoever. The commentary is not to be construed as an offer to sell or a solicitation of an offer to buy any securities. Erebor Insights accepts no liability whatsoever for any loss arising from any use or reliance on this commentary or any of the information contained herein.

Also note that as markets change continuously, previously published information and data may not be current and should not be relied upon, and there may be delays, omissions, or inaccuracies in such information. Erebor Insights believes that all information contained in this report was correct at the time of going to press. However, they cannot accept liability for any errors

This information is distributed electronically through email. Should you wish to no longer receive electronic communications from us, please contact [info@ereborinsights.com](mailto:info@ereborinsights.com) and indicate in the subject line your full name and/or corporate entity name and that you wish to unsubscribe from receiving this electronic communication.