

NEWSLETTER

Aura
Minerals
Secures
Term Loan
of
US\$100M

TG: Top Winner
RETO: Top Loser



Platinum went down
this week by -6.37%



Weekly Market Overview

| Commodity | Weekly Chg. | Weekly Chg. % | Vol. |
|-----------|-------------|---------------|-------|
| Gold | ↘ | -1.28% | 0.49% |
| Silver | ↘ | -4.46% | 0.73% |
| Copper | ↘ | -3.41% | 0.85% |
| Platinum | ↘ | -6.37% | 0.80% |
| Aluminium | ↘ | -2.73% | 0.39% |
| Palladium | ↘ | -2.73% | 0.58% |
| Nickel | ↘ | -2.73% | 1.41% |
| Lead | ↘ | -0.90% | 1.00% |
| Tin | ↘ | -0.98% | 2.28% |
| Zinc | ↘ | -2.08% | 1.33% |

Gold Junior Miners

Neutral

- Gold Indices: **Neutral**
- Commodity Sentiment: **Neutral**
- Junior Miners Sentiment: **Neutral**

Silver Junior Miners

Negative

- Silver Indices: **Negative**
- Commodity Sentiment: **Neutral**
- Junior Miners Sentiment: **Neutral**

Copper Junior Miners

Neutral

- Copper Indices: **Neutral**
- Commodity Sentiment: **Neutral**
- Junior Miners Sentiment: **Neutral**

Commodity Sentiment

Neutral

- Commodities Indices: **Neutral**
- Inflation: **Ext. Positive**
- Consumer Sentiment: **Ext. Positive**

Junior Miners Sentiment

Neutral

- Gold Indices: **Neutral**
- Silver Indices: **Negative**
- Copper Indices: **Neutral**
- Commodity Sentiment: **Neutral**

Our barometer is a way to gauge market movements and whether security instruments are fairly priced. The theory is based on the logic that excessive negativity tends to drive down the prices, and too much positivity tends to have the opposite effect.

Our barometer is a compilation of different indicators that measure some aspect of ETF and commodities behavior. They are comprised of market momentum, price strength, and stock price breadth. It tracks how much these individual indicators deviate from their average. The weightage of each factor is subject to past behavior and market conditions.

| Top 5 ↗ | | Top 5 ↘ | |
|---------|------------|---------|------------|
| Ticker | 1 W Chg. % | Ticker | 1 W Chg. % |
| TG | 7.50% | RETO | -38.61% |
| ATKX | 6.59% | AUMN | -17.89% |
| UEC | 5.91% | ,UX | -11.83% |
| LEU | 4.18% | HYMC | -10.93% |
| XPL | 2.56% | AA | -9.65% |

Top 5 Weekly Private Placement News

- Aura Minerals Announces Full Construction Decision for Borborema Project and Secures Term Loan of US\$100 million to Fund Construction : [Link](#)
- Foran Secures C\$67 Million Equipment Finance Facility for McIlvenna Bay: [Link](#)
- Aldebaran Upsizes Previously Announced Financing to \$20.1 M: [Link](#)
- TVI Pacific's 30.66% owned TVIRD Closes US \$14 million Short Term Loan for its Balabag Gold Mine: [Link](#)
- SNOWLINE GOLD COMPLETES OVERSUBSCRIBED C\$16.5 MILLION FINANCING: [Link](#)

19 Deals
>\$240M

[Find all the Private Placements and News HERE](#)

Top Junior Mining News

- Metalla Royalty & Streaming and Nova Royalty Combine to Build the Next Intermediate Royalty Company: [Link](#)
- Receiver puts abandoned Minto mine in the Yukon up for sale: [Link](#)
- Allied Gold Corporation Announces Closing of Business Combination and Going Public Transaction: [Link](#)
- Mineral Resources (MinRes) has entered into an implementation agreement to acquire the Bald Hill lithium mine in WA.: [Link](#)

Opinions and Insights

- Gold Weekly Price Forecast: [Link](#)
- Silver Weekly Price Forecast: [Link](#)
- Gold Price Forecast: XAU/USD struggles to snap recent losses, trades around \$1,920: [Link](#)

High Impact Calendar (GMT +1:00)

| GMT +00:00 | | High Impact Expected News | | |
|------------|--------|-------------------------------------|----------|----------|
| Date | Time | Announcement | Previous | Forecast |
| 9/11/2023 | 7:41am | CH New Loans | 346B | 1275B |
| 9/13/2023 | 3:30pm | US Core CPI m/m | 0.20% | 0.20% |
| 9/13/2023 | 3:30pm | US CPI m/m | 0.20% | 0.60% |
| 9/13/2023 | 3:30pm | US CPI y/y | 3.20% | 3.60% |
| 9/14/2023 | 3:30pm | US Core PPI m/m | 0.30% | 0.20% |
| 9/14/2023 | 3:30pm | US Core Retail Sales m/m | 1.00% | 0.40% |
| 9/14/2023 | 3:30pm | US PPI m/m | 0.30% | 0.40% |
| 9/14/2023 | 3:30pm | US Retail Sales m/m | 0.70% | 0.20% |
| 9/14/2023 | 3:30pm | US Unemployment Claims | 216K | 225K |
| 9/14/2023 | 3:45pm | EZ ECB Press Conference | | |
| 9/15/2023 | 5:00pm | CH Industrial Production y/y | 3.70% | 3.90% |
| 9/15/2023 | 3:30pm | US Empire State Manufacturing Index | -19 | -9.5 |
| 9/15/2023 | 5:00pm | US Prelim UoM Consumer Sentiment | 69.5 | 69.2 |

Erebor Technicals

SPGSCI

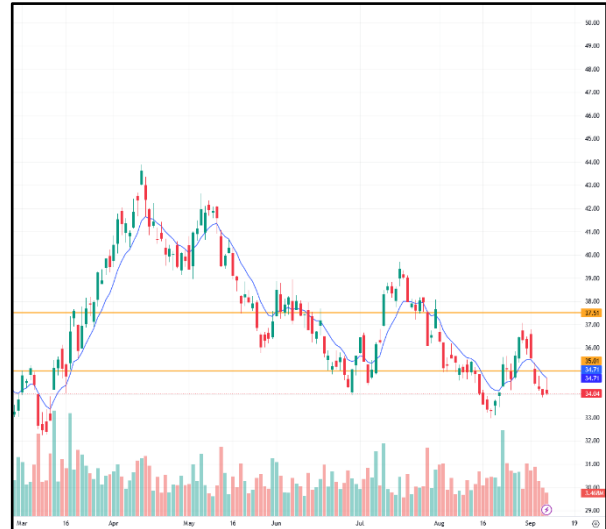


Comments:

The SPGSCI closed last week lower than it opened, with a slight downward trend.

The oscillators are neutral, suggesting that the market is indecisive.

GDXJ

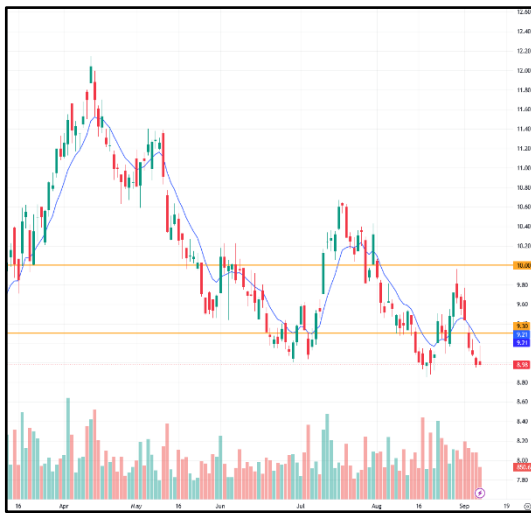


Comments:

GDXJ, the VanEck Junior Gold Miners ETF, closed last week lower than it opened, with a slight downward trend.

The oscillators are neutral, suggesting that the market is indecisive.

SILJ:



COPX:



Comments:

SILJ closed last week lower than it opened, with a slight downward trend.

The oscillators are neutral, suggesting that the market is indecisive.

Comments:

COPX closed last week lower than it opened, with a slight downward trend.

The oscillators are neutral, suggesting that the market is indecisive.

Disclaimer

The information in this report is provided by www.ereborinsights.com solely for informational purposes and should not be regarded as a recommendation to buy, sell or otherwise deal in any particular investment. The opinions expressed in this report are the opinions of the author and the information provided is drawn from sources believed to be reliable, but the accuracy or completeness of the information is not guaranteed, nor in providing it does Erebor Insights or persons assume any responsibility or liability whatsoever. The commentary is not to be construed as an offer to sell or a solicitation of an offer to buy any securities. Erebor Insights accepts no liability whatsoever for any loss arising from any use or reliance on this commentary or any of the information contained herein.

Also note that as markets change continuously, previously published information and data may not be current and should not be relied upon, and there may be delays, omissions, or inaccuracies in such information. Erebor Insights believes that all information contained in this report was correct at the time of going to press. However, they cannot accept liability for any errors

This information is distributed electronically through email. Should you wish to no longer receive electronic communications from us, please contact info@ereborinsights.com and indicate in the subject line your full name and/or corporate entity name and that you wish to unsubscribe from receiving this electronic communication.